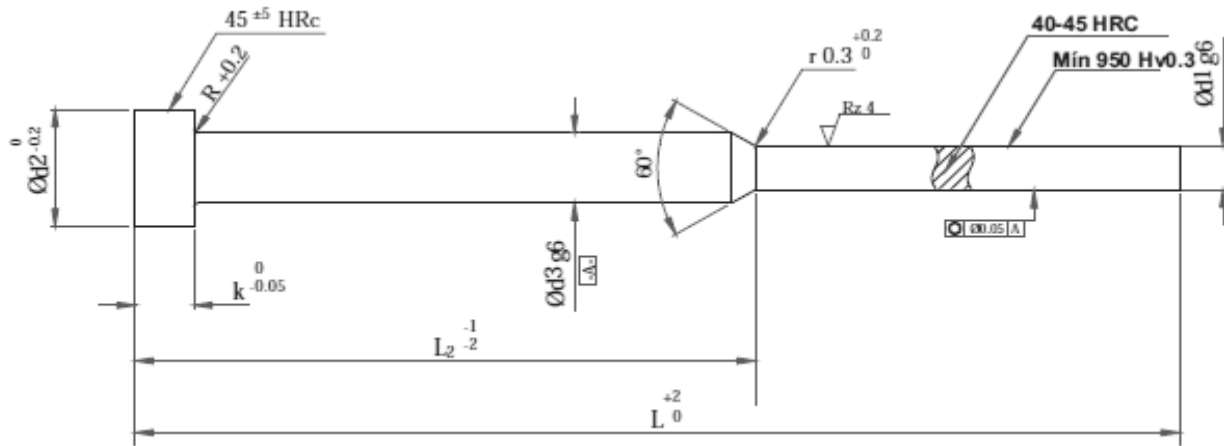


Through Hardened and Fine Ground  
Max. Working Temperature of 220°C

Shaft Hardness: 60 +/-2 HRC  
Head Hardness: 45 +/-5 HRC



d1	d3	d2	k	R	L/L2					
					80/35	100/50	125/50	160/75	200/75	250/100
0.8	2	4	2	0.2						
0.9										
1.0										
1.1										
1.2										
1.3										
1.4	3	6	3	0.3						
1.5										
1.6										
1.7										
1.8										
1.9										
2.0										
2.1										
2.2										
2.3										
2.4										
2.5										
2.6										
2.7										
2.8										
2.9										

Order format: CH / d1 x L2 x L