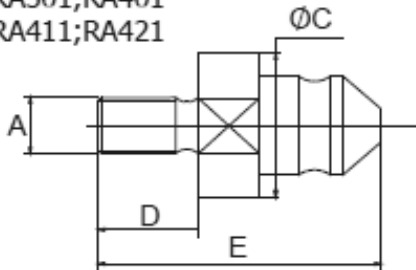


MALE

TYPE:

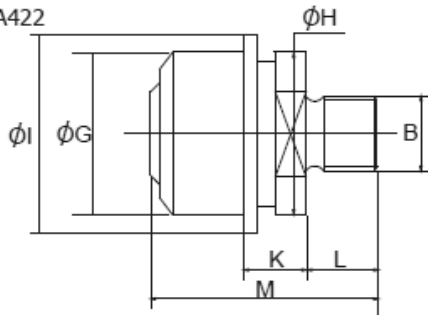
RA301;RA401
RA411;RA421



FEMALE

TYPE:

RA302;RA402
RA412;RA422

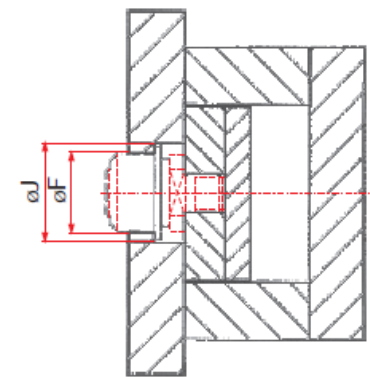


Male

| Code | A | C | D | E | Strength |
|-------|---------|------|----|------|-----------|
| RA301 | M10x150 | 22.8 | 20 | 45.5 | 1,500 kg |
| | M12x175 | | | | |
| | M14x200 | | | | |
| RA401 | M10x150 | 25.8 | 20 | 55 | 2,400 kg |
| | M12x175 | | | | |
| | M14x200 | | | | |
| RA411 | M16x200 | 35 | 25 | 68 | 3,200 kg |
| | M18x250 | | | | |
| | M20x250 | | | | |
| | M24x300 | | | | |
| | M27x300 | | | | |
| RA421 | M24x300 | 43 | 30 | 80 | 18,000 kg |
| | M27x300 | | | | |
| | M30x350 | | | | |
| | M36x400 | | | | |

Order format: Code / A

Example: RA411 / M16x200



Female

| Code | B | F | G | H | I | J | K | L | M | Strength |
|---------|---------|----|----|----|----|----|----|----|------|-----------|
| RA302 | M16x150 | 34 | 32 | 32 | 39 | 43 | 9 | 15 | 42.5 | 1,500 kg |
| RA402 | M16x150 | 40 | 38 | 38 | 48 | 53 | 13 | 15 | 52 | 2,400 kg |
| RA412 | M16x150 | 58 | 56 | 52 | 65 | 70 | 17 | 18 | 68 | 3,200 kg |
| | M18x150 | | | | | | | | | |
| | M20x150 | | | | | | | | | |
| | M24x150 | | | | | | | | | |
| | M27x150 | | | | | | | | | |
| M30x150 | | | | | | | | | | |
| RA422 | M24x150 | 66 | 64 | 60 | 74 | 79 | 22 | 23 | 84 | 18,000 kg |
| | M27x150 | | | | | | | | | |
| | M30x150 | | | | | | | | | |
| | M36x200 | | | | | | | | | |

Order format: Code / B

Example: RA412 / M16x150