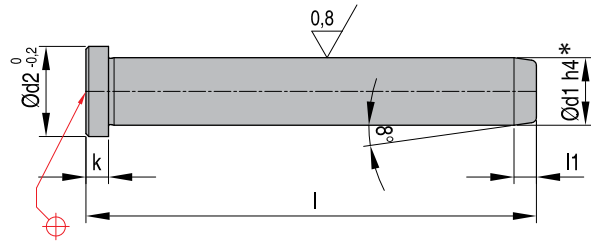


GB 112

Guide pillars

Mat.: 1.7131 -720 HV 30

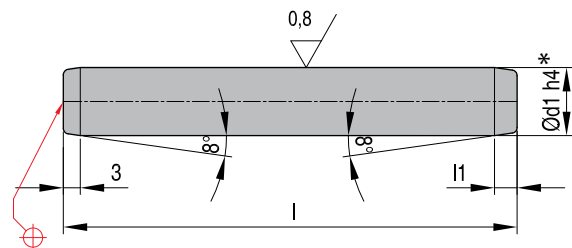


REF d1 x l	d2	l1	
GB 112 12x80	16	4	4
GB 112 12x100	16	4	4
GB 112 12x120	16	4	4
GB 112 18x120	22	7	6
GB 112 18x140	22	7	6
GB 112 18x160	22	7	6
GB 112 24x120	28	7	6
GB 112 24x160	28	7	6
GB 112 24x200	28	7	6
GB 112 30x160	36	7	6
GB 112 30x200	36	7	6
GB 112 30x240	36	7	6

GB 113

Guide pillars

Mat.: 1.7131 -720 HV 30

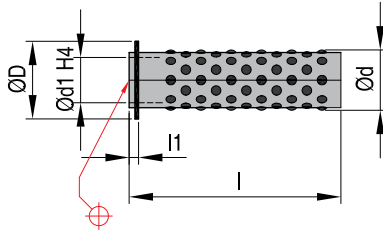


REF d1 x l	l1
GB 113 12x100	4
GB 113 12x125	4
GB 113 18x100	7
GB 113 18x125	7
GB 113 18x160	7
GB 113 24x120	7
GB 113 24x160	7
GB 113 24x200	7
GB 113 30x160	7
GB 113 30x240	7

Ball cages

Mat.: Brass Balls: Steel-hardened as per DIN 5401

FW 12

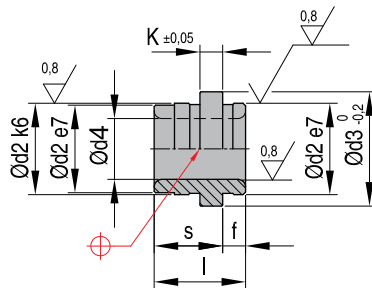


REF d1 x l	l1	d	D	d1	l
FW 12 12x40	2,5	16	20,5	12	40
FW 12 12x56	2,5	16	20,5	12	56
FW 12 18x45	2,8	24	28,6	18	45
FW 12 18x56	2,8	24	28,6	18	56
FW 12 18x71	2,8	24	28,6	18	71
FW 12 24x45	3,6	30	36,5	24	45
FW 12 24x71	3,6	30	36,5	24	71
FW 12 24x90	3,6	30	36,5	24	90
FW 12 30x56	4,8	38	43,5	30	56
FW 12 30x75	4,8	38	43,5	30	75
FW 12 30x95	4,8	38	43,5	30	95

Guide bushes for ball cages

Mat.: 1.7131 - 680 HV 30

FW 13



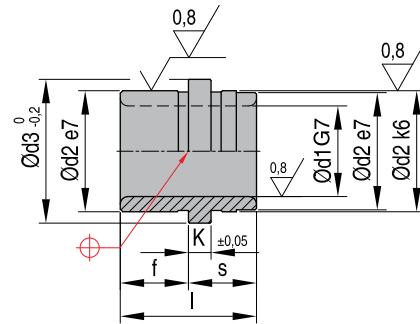
REF d1* x S	d4	d2	d3	f	l	K	S
FW 13 12x18	16	22	26	6	24	6	18
FW 13 18x23	24	30	35	11	34	6	23
FW 13 24x27	30	38	43	17	44	6	27
FW 13 30x33	38	46	52	21	54	6	33

*See d1 on GB112 and GB113 on p44

FW 14

"Leader pin bushings

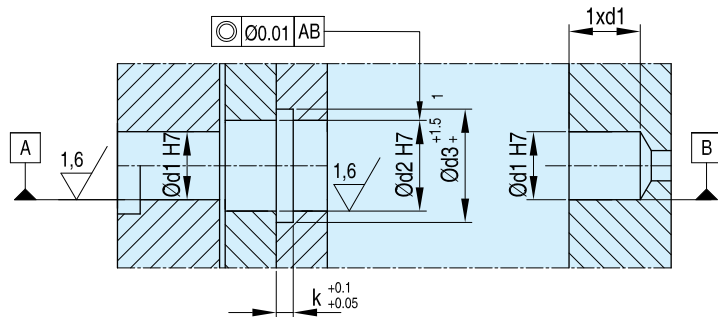
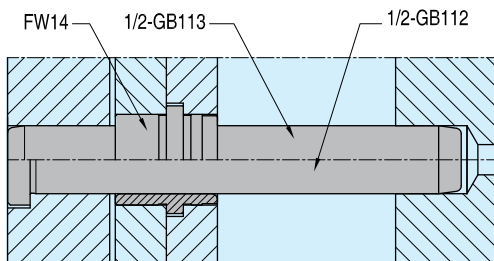
Mat.: Brons



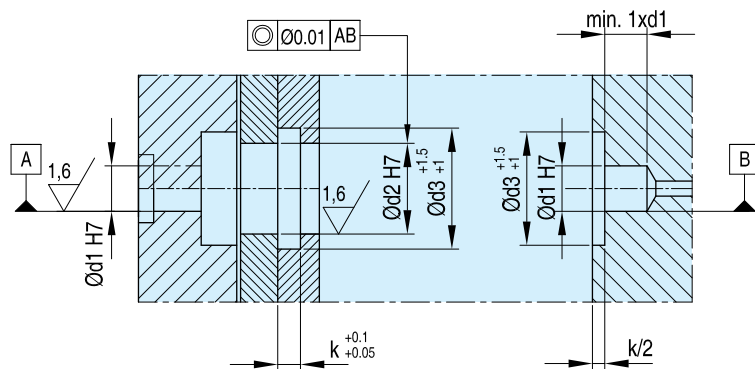
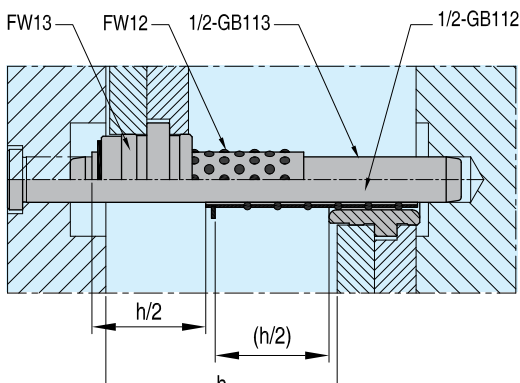
REF d1	d2	d3	f	K	l
FW 14 12x6	16	19	9	3	15
FW 14 12x9	16	19	12	3	21
FW 14 12x12	16	19	17	3	29
FW 14 18x12	25	29	17	6	29
FW 14 18x17	25	29	22	6	39
FW 14 18x22	25	29	27	6	49
FW 14 30x17	42	46	22	6	39
FW 14 30x22	42	46	27	6	49
FW 14 30x27	42	46	36	6	63

Installation Example

GB 112 - GB 113 - FW 14



GB 112 - GB 113 - FW 12 - FW13

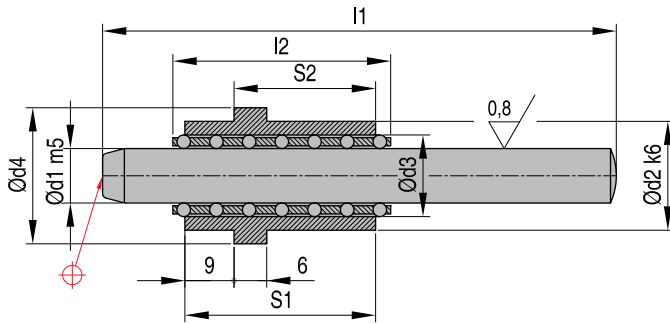




Guided ejection system

1.7130

K 7580



REF	d1	d2	d3	d4	l1	l2	S2
K 7580x10x16	10	20	15	25	50	40	16
K 7580x10x20	10	20	15	25	70	40	20
K 7580x10x26	10	20	15	25	100	40	26
K 7580x10x36	10	20	15	25	120	40	36
K 7580x16x20	16	30	22	35	70	45	20
K 7580x16x26	16	30	22	35	100	50	26
K 7580x16x36	16	30	22	35	120	60	36