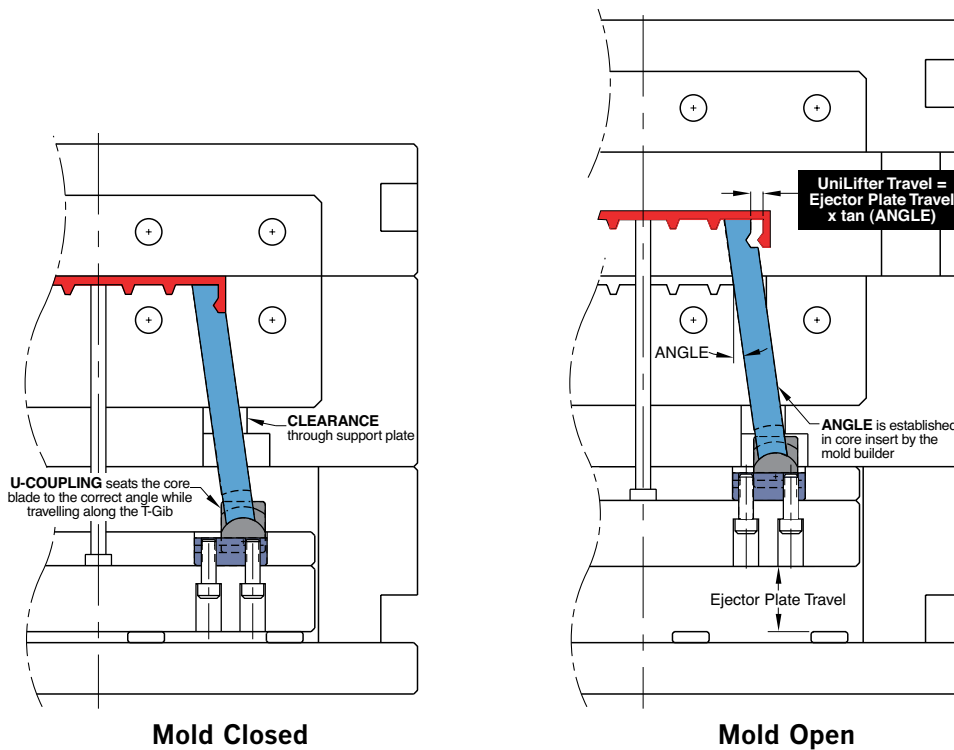


The UniLifter undercut release system incorporates a three piece set: Core Blade, U-Coupling, and T-Gib.



Application Guidelines:

1. Typical angle is 5-10°, though users report success at greater angles with guides installed. Contact Engineering for application review.
2. Guided Ejection is recommended, and if there is less than half of the Core Blade bearing in the insert, lifter guide plates should be added.
3. Recommended clearance is .001"-.0015" (.025-.038mm) where permissible.
4. Verify that the core insert material is at least 10 HRC different than standard standard Core Blades, and for additional performance, consider coatings or treatments for increased hardness or lubricity.
5. Locking angles can be designed to accept molding pressure, and non-standard sizes or pre-roughed Core Blades can be provided by accessing www.procomps.com.

US Patent No. 5,137,442, and No. 5,316,467
Canadian Patent No. 2,048,218
European Patent No. EP498102
Mexican Patent No. 175084

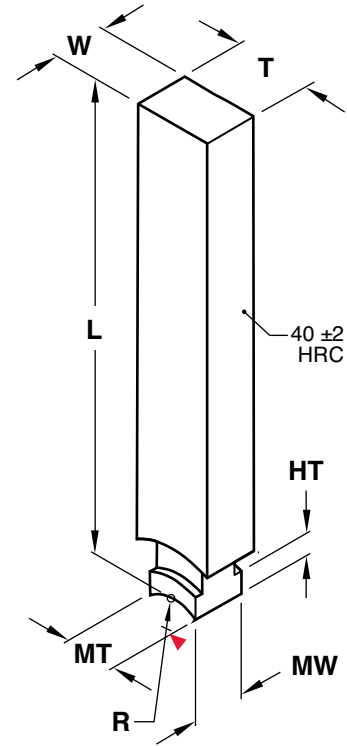
CORE BLADES

M H-13 **H** 38-42 HRC

Flat Core Blades - Metric Standard

Note: All dimensions and tolerances are in millimeters.

MW	R	HT	CATALOG NUMBER	T +0.000 -0.025	W +0.000 -0.025	L +2 -0	MT MIN. THK.
10	10	5	CBMM10X10L250	10.25	10.25	250	10.0
			CBMM10X20L250	10.25	20.25	250	10.0
			CBMM15X15L250	15.25	15.25	250	15.0
			CBMM15X30L400	15.25	30.25	400	15.0
			CBMM20X10L250	20.25	10.25	250	15.0
			CBMM20X20L400	20.25	20.25	400	15.0
			CBMM30X15L400	30.25	15.25	400	15.0



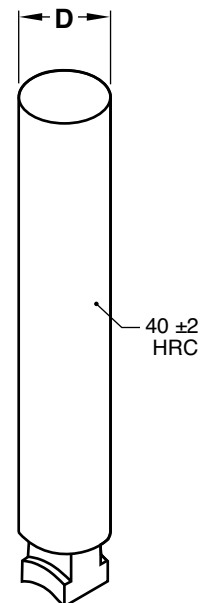
The UniLifter Series (MW=.500) is also available in aluminum bronze. To order, replace "CBS" with "CBA" in the catalog number as shown: CBA50X50L14.

For aluminum bronze in other sizes or alternate materials/sizes, please contact Customer Service for a quote.

Round Core Blades - Metric Standard

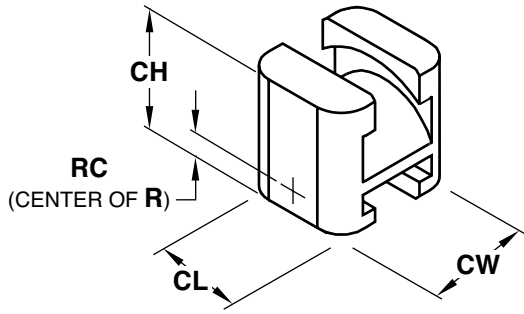
Note: All dimensions and tolerances are in millimeters.

MW	R	HT	CATALOG NUMBER	D +0.000 -0.025	L +2 -0	MT MIN. THK.
10	10	5	CBMM10DL250	10.00	250	10.0
			CBMM15DL250	25.00	250	10.0



CAD insertion point

U-COUPLINGS



Metric Standard

M H-13 **S** Blackened

Note: All dimensions and tolerances are in millimeters.

SERIES	R	RC	CATALOG NUMBER	CW	CL	CH
Metric	10	6	UCMM22	22	18	25

T-GIBS

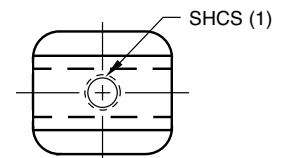
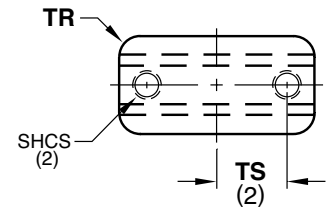
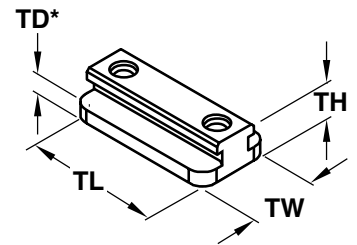
Metric Standard

M H-13 **H** 40-44 HRC **S** Black Oxide

Note: All dimensions and tolerances are in millimeters.

SERIES	TW +.000 -.025	TH +.25 -.00	TD* +.25 -.00	TR	SHCS (Included)	CATALOG NUMBER	TS	TL +.00 -.25	Travel Allowed
Metric	22	13	6	5	M-5x20	TGMM10	10	33	10
						TGMM30	15	52	30

*TD Includes fitting stock for final adjustments.



Plan view for TGM100 and TGU25.