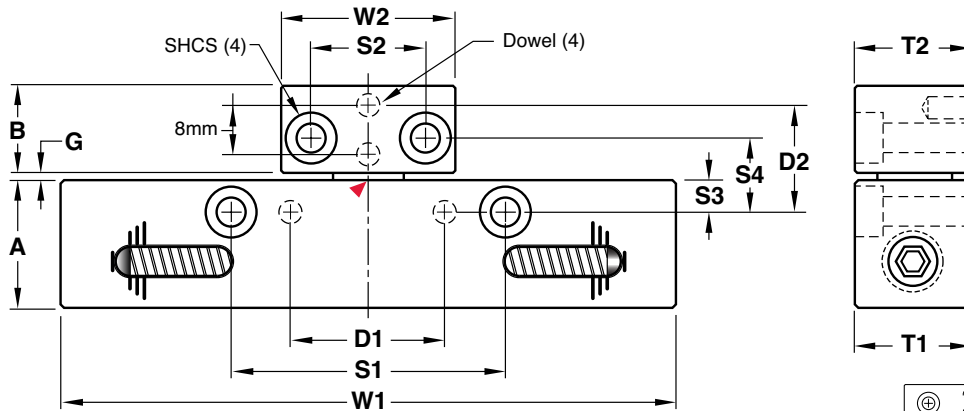
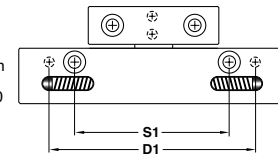


PARTING LINE SEQUENCE CONTROL



Screw and dowel orientation for RPL-140 and RPL-140-40



► CAD insertion point

Housing: **M** 4140 **H** 27-32 HRC **S** Black Oxide

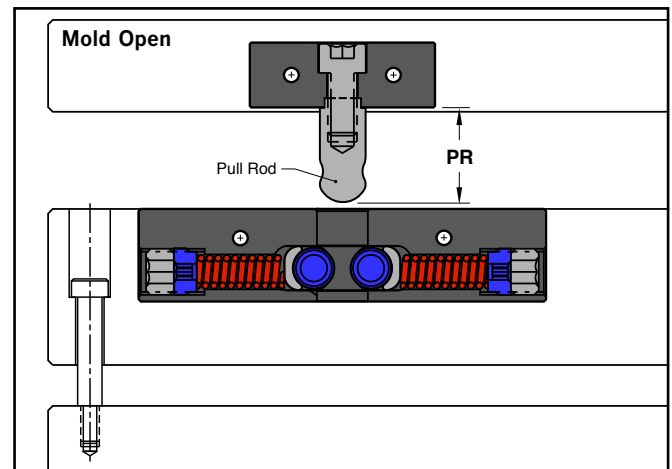
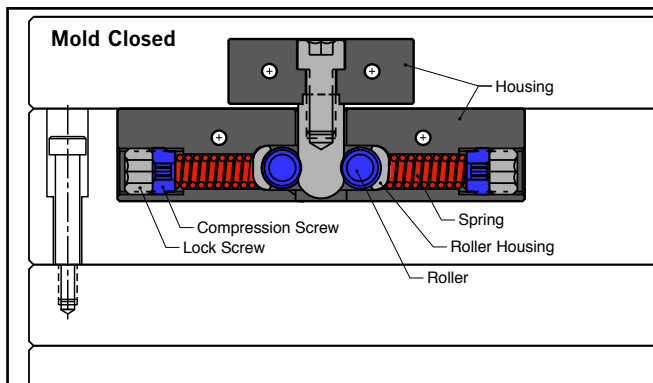
Roller: **M** M-2 **H** 62-64 HRC, Nitrided

Pull Rod: **M** M-2 **H** 62-64 HRC, Nitrided

Note: All dimensions are in millimeters.

CATALOG NUMBER	W1	T1	W2	T2	A	B	G	S1	S2	S3	S4	D1	D2	Dowel Size	SHCS	PR See Below
RPL-135	135	25	38	25	28	19	1	60.0	25.0	7.0	15.6	30.0	22.1	ø5	M6 x 25	26
RPL-135-40	135	25	38	25	28	19	40	60.0	25.0	7.0	54.6	30.0	61.1	ø5	M6 x 25	65
RPL-140	140	32	64	25	32	22	2	70.0	35.0	10.0	23.1	100.0	28.1	ø6	M10 x 35	30
RPL-140-40	140	32	64	25	32	22	38	70.0	35.0	10.0	59.3	100.0	64.3	ø6	M10 x 35	66

Roller Pullers are available with special length rods to suit applications where a different distance between the housings is required. For pricing and delivery, contact Customer Service with the catalog number above along with the required gap or "G" dimension.



Pull Force

Tighten lock screws equally to achieve forces below.

CATALOG NUMBER			
RPL-135	45 Kg (100 lbs)	75 Kg (160 lbs)	100 Kg (220 lbs)
RPL-135-40	45 Kg (100 lbs)	75 Kg (160 lbs)	100 Kg (220 lbs)
RPL-140	45 Kg (100 lbs)	100 Kg (220 lbs)	150 Kg (330 lbs)
RPL-140-40	45 Kg (100 lbs)	100 Kg (220 lbs)	150 Kg (330 lbs)

Patents pending

Technical Information:

- Mounting pattern matches industry standards.
- Compression screw provides adjustable pull force.
- Roller design allows for smooth action.
- Mounting screws and dowels included.