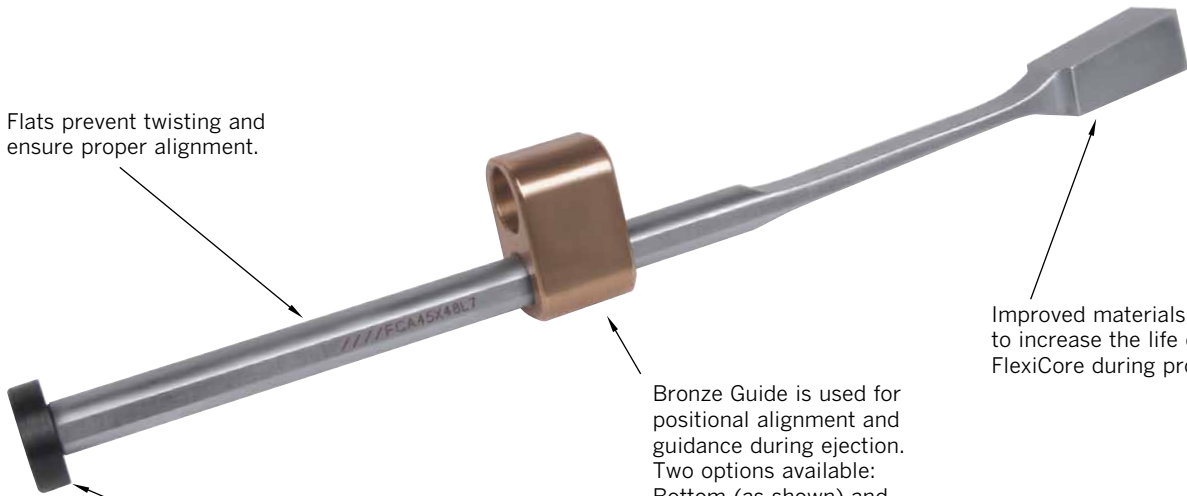


Flats prevent twisting and ensure proper alignment.

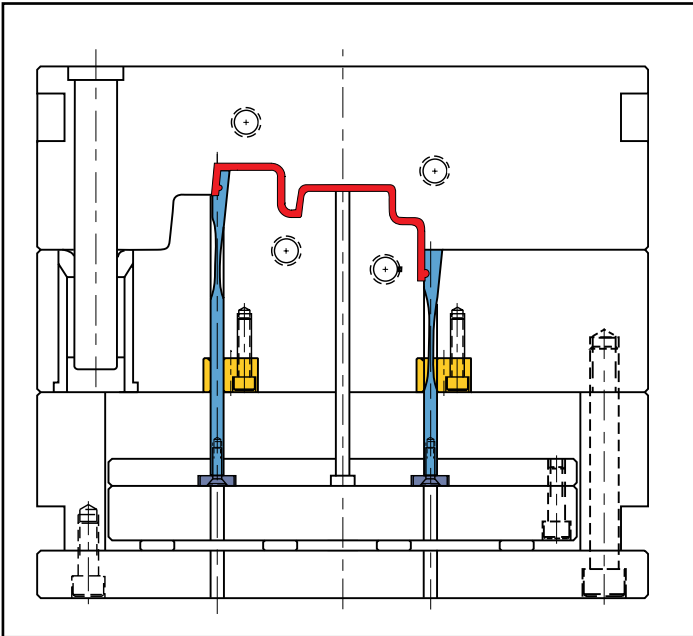


Improved materials used to increase the life of the FlexiCore during production.

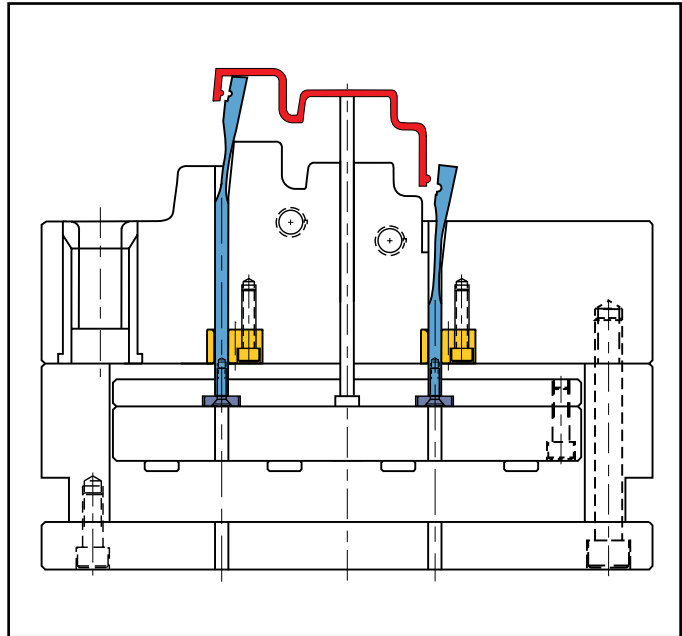
Bronze Guide is used for positional alignment and guidance during ejection. Two options available: Bottom (as shown) and Round for easy bore machining.

Heel Plate is included to retain FlexiCore.

FlexiCore Assembly includes: FlexiCore, Bronze Guide (Bottom or Round), Heel Plate, and Flat Head Cap Screw.



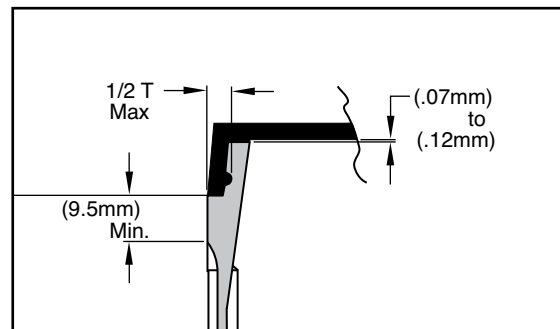
**Mold Closed**

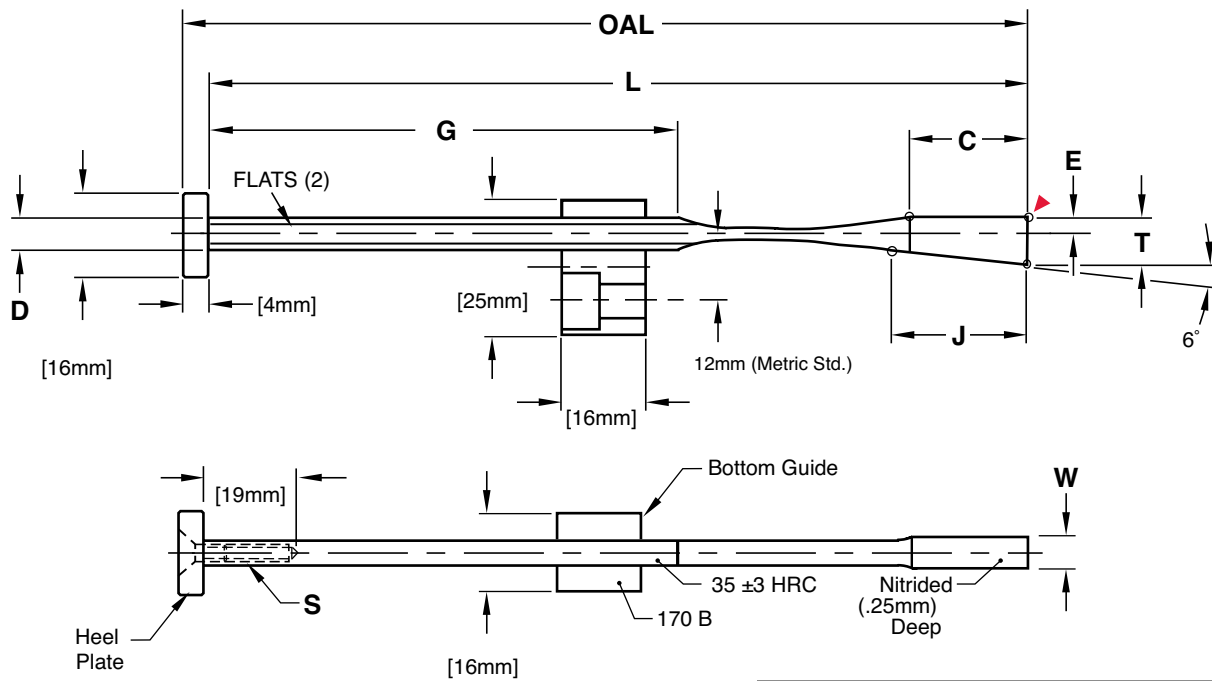


**Mold Open**

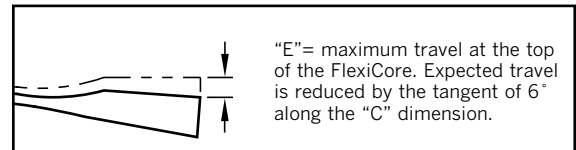
### Application Guidelines:

1. The FlexiCore diameter (D) must be within the Guide prior to ejection as shown above.
2. Only surface treatments applied at low temperatures such as Electroless Nickel-based or chromium deposition treatments are permitted.
3. Maximum temperature is 250° F (125° C).
4. Please contact Engineering to review any designs if questions arise or if your application differs from the examples shown.





► CAD insertion point

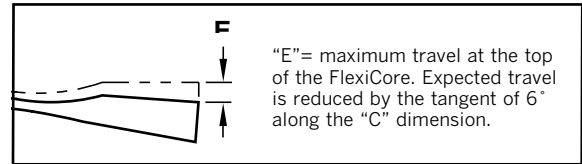
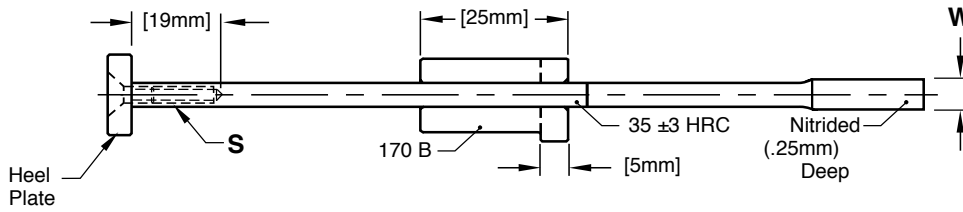
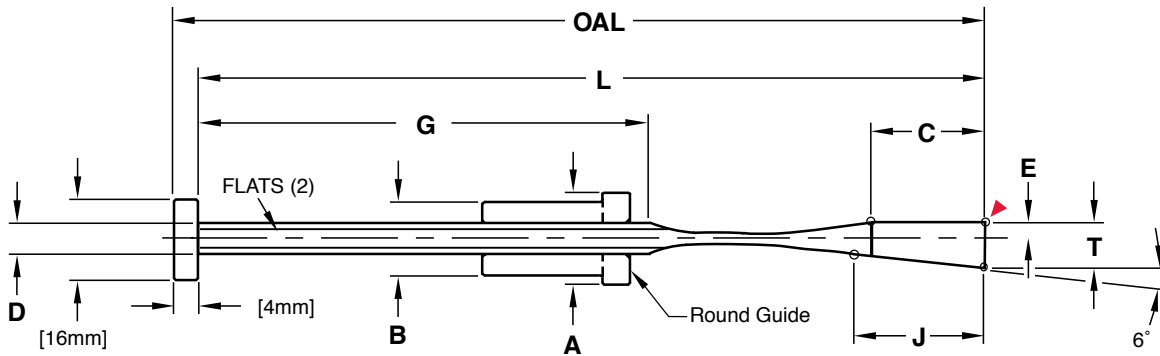


**M** FlexiCore: AISI 4340 with thin, dense Chromium treatment, Guide: CA954 Solid Bronze, Heel Plate: AISI 1018

Note: All dimensions and tolerances are in millimeters.

CATALOG NUMBER	T +.05 -.00	W +.05 -.00	L +.25 -.00	OAL REF	D +.000 -.025	C ±.35	E	G +.25 -.00	J	S
FCA9X6L160	9	6.2	162.5	166.5	5.94	22	3.5	88.6	24.3	M4-.7 x 20
FCA9X8L160	9	8.2	162.5	166.5	6.35	22	3.5	88.4	24.3	M4-.7 x 20
FCA11X10L200	11.5	10.2	200.0	204.0	7.92	26	4.5	111.2	26.0	M5-.8 x 20
FCA11X12L200	11.5	12.2	200.0	204.0	7.92	26	4.5	111.2	26.0	M5-.8 x 20
FCA12X14L200	12.5	14.2	200.0	204.0	7.92	30	4.5	107.2	28.5	M5-.8 x 20
FCA12X16L200	12.5	16.2	200.0	204.0	7.92	30	4.5	107.2	28.5	M5-.8 x 20

Assemblies include: FlexiCore, Bottom Guide, Heel Plate, and Flat Head Cap Screw.



**M** FlexiCore: AISI 4340 with thin, dense Chromium treatment, Guide: CA954 Solid Bronze, Heel Plate: AISI 1018

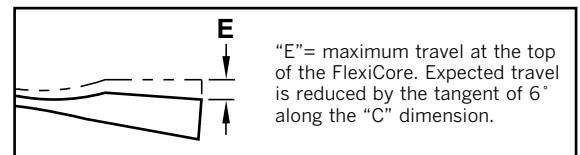
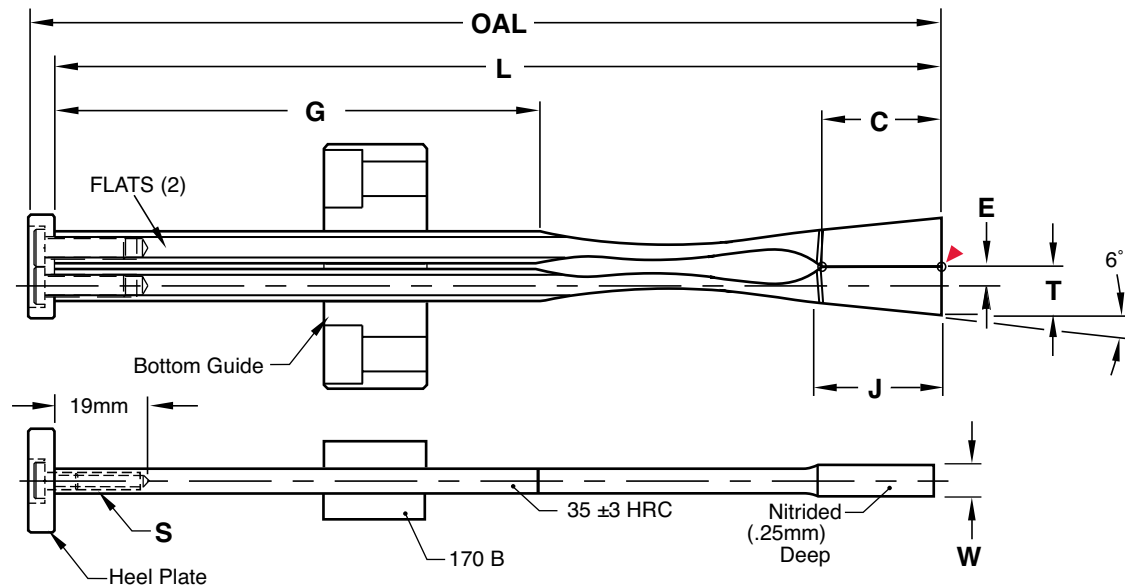
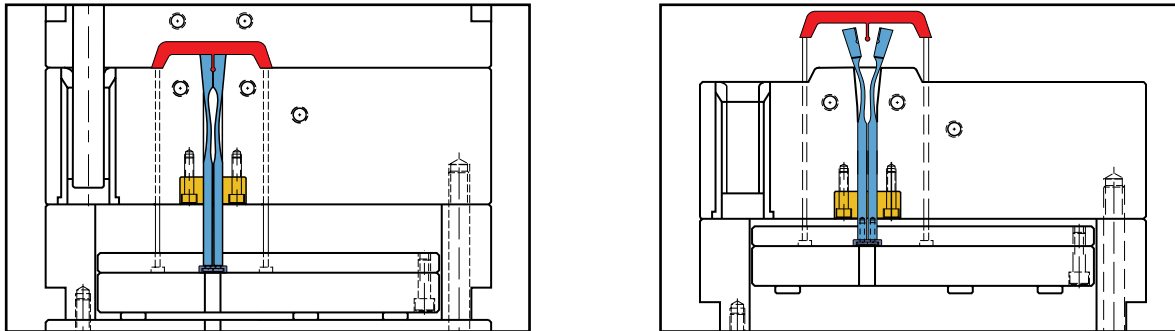
Note: All dimensions and tolerances are in millimeters.

CATALOG NUMBER	T +.05 -.00	W +.05 -.00	L +.25 -.00	OAL REF	D +.000 -.025	C ±.35	E	G +.25 -.00	J	S	A	B
<b>FCR9X6L160</b>	9	6.2	162.5	166.5	5.94	22	3.5	88.6	24.3	M4-.7 x 20	16	12
<b>FCR9X8L160</b>	9	8.2	162.5	166.5	6.35	22	3.5	88.4	24.3	M4-.7 x 20	16	12
<b>FCR11X10L200</b>	11.5	10.2	200.0	204.0	7.92	26	4.5	111.2	26.0	M5-.8 x 20	20	16
<b>FCR11X12L200</b>	11.5	12.2	200.0	204.0	7.92	26	4.5	111.2	26.0	M5-.8 x 20	20	16
<b>FCR12X14L200</b>	12.5	14.2	200.0	204.0	7.92	30	4.5	107.2	28.5	M5-.8 x 20	20	16
<b>FCR12X16L200</b>	12.5	16.2	200.0	204.0	7.92	30	4.5	107.2	28.5	M5-.8 x 20	20	16

Assemblies include: FlexiCore, Round Guide, Heel plate, and Flat head Cap Screw.

▶ CAD insertion point

The double action bottom guide allows for the FlexiCore System to be used to release boss details with undercuts. FlexiCore Double Assembly (FCDA) includes: two FlexiCores, one Bottom Guide, one Heel Plate, and two Low Head Cap Screws.



### Inch Standard

**M** FlexiCore: AISI 4340 with thin, dense Chromium treatment, Guide: CA954 Solid Bronze, Heel Plate: AISI 1018

Note: All dimensions and tolerances are in millimeters.

CATALOG NUMBER	T +.05 -.00	W +.05 -.00	L +.25 -.00	OAL REF	D +.000 -.025	C ±.035	E 015	G +.25 -.00	J +.01 -.00	S +.000 -.025
FCDA9X6L160	9	6.2	162.5	166.5	5.94	22	3.5	88.6	24.3	M4-.7 x 20
FCDA11X12L200	11.5	12.2	200.0	204.0	7.92	26	4.5	111.2	26.0	M5-.8 x 20
FCDA12X14L200	12.5	14.2	200.0	204.0	7.92	30	4.5	107.2	28.5	M5-.8 x 20
FCDA12X16L200	12.5	16.2	200.0	204.0	7.92	30	4.5	107.2	28.5	M5-.8 x 20

▶ CAD insertion point

### Inch Standard

**M** P-20 Pre-Hard **H** Nitrided .005" Deep

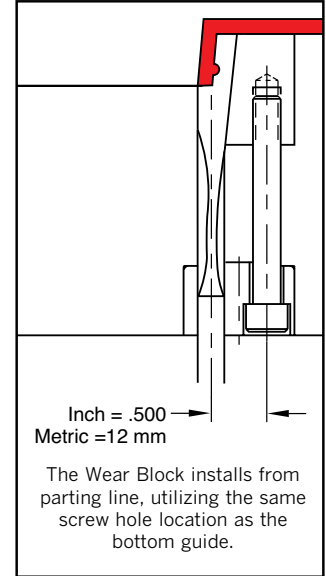
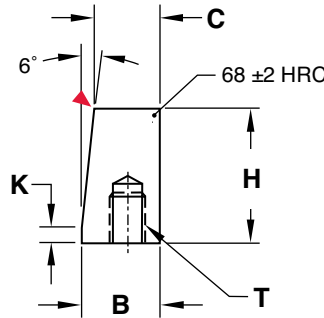
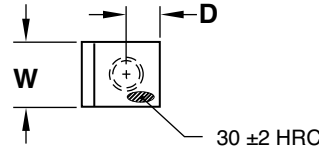
CATALOG NUMBER	W +.002 -.000	D ± .01	B +.001 -.000	C +.001 -.000	H	K	T Thread
<b>FCWB-24</b>	.244	.250	.626	.533	1.000	.115	#10-24
<b>FCWB-32</b>	.322	.250	.626	.533	1.000	.115	1/4-20
<b>FCWB-40</b>	.401	.250	.567	.474	1.000	.115	1/4-20
<b>FCWB-48</b>	.480	.250	.567	.474	1.000	.115	1/4-20

Note: FCWB-24 is designed for use with a 1/4Ø shoulder bolt.

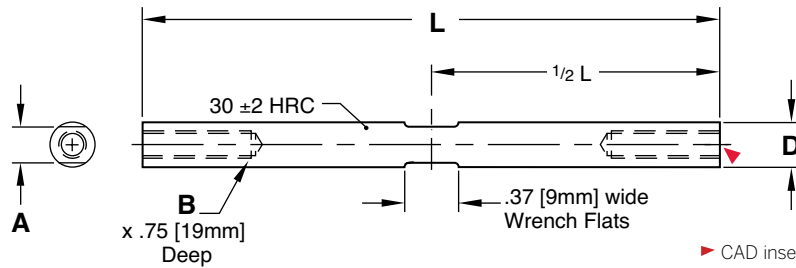
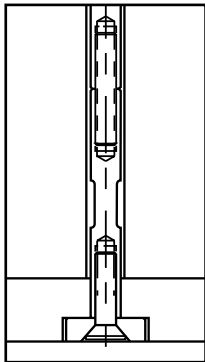
### Metric Standard

Note: All dimensions and tolerances are in millimeters.

CATALOG NUMBER	W +.05 -.00	D ± .25	B +.025 -.000	C +.025 -.000	H	K	T Thread
<b>FCWBM-6</b>	6.2	7.2	15.9	13.55	25.4	2.9	M5-.8
<b>FCWBM-8</b>	8.2	7.2	15.9	13.55	25.4	2.9	M6-1
<b>FCWBM-10</b>	10.2	7.2	14.4	12.05	25.4	2.9	M6-1
<b>FCWBM-12</b>	12.2	7.2	14.4	12.05	25.4	2.9	M6-1
<b>FCWBM-14</b>	14.2	7.2	15.2	12.11	33.2	3.5	M6-1
<b>FCWBM-16</b>	16.2	7.2	15.2	12.11	33.2	3.5	M6-1



► CAD insertion point



► CAD insertion point

### Inch Standard

**M** 4140 Pre-Hard

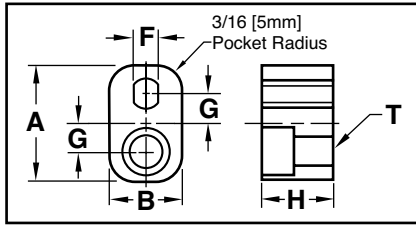
D +.000 -.005	B	A	L +.01 -.00	
			2"	4"
.232	#8-32	.187	<b>FCX8L2</b>	<b>FCX8L4</b>
.310	#10-24	.250	<b>FCX10L2</b>	<b>FCX10L4</b>

### Metric Standard

Note: All dimensions and tolerances are in millimeters.

D +.00 -.12	B	A	L +.25 -.00	
			50MM	100MM
6	M4-.7	4.8	<b>FCXM4L50</b>	<b>FCXM4L100</b>
8	M5-.8	6.3	<b>FCXM5L50</b>	<b>FCXM5L100</b>

## REPLACEMENT GUIDES

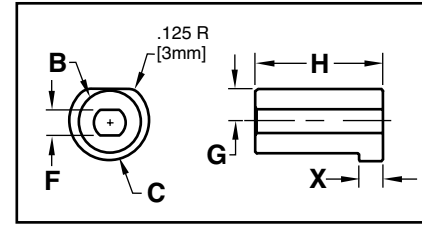


### Inch Standard

**M** CA954 Solid Bronze

CATALOG NUMBER	A	B	H	F	G	T
<b>FCBG-24</b>	1.000	.625	.625	.190	.250	1/4 $\phi$ SBLT
<b>FCBG-32</b>	1.000	.625	.625	.200	.250	1/4-20
<b>FCBG-40</b>	1.000	.625	.625	.290	.250	1/4-20
<b>FCBG-6</b>	25	16	16	4.8	6	M-5 SBLT
<b>FCBG-8</b>	25	16	16	5.0	6	M6-1
<b>FCBG-10</b>	25	16	16	7.3	6	M6-1

### Metric Standard



### Inch Standard

**M** CA954 Solid Bronze

CATALOG NUMBER	B	C	H	F	X	G
<b>FCRG-24</b>	.5000	.625	1.000	.190	.187	.250
<b>FCRG-32</b>	.5000	.625	1.000	.200	.187	.250
<b>FCRG-40</b>	.6250	.750	1.000	.290	.187	.312
<b>FCRG-6</b>	12	16	25	4.8	5	6
<b>FCRG-8</b>	12	16	25	5.0	5	6
<b>FCRG-10</b>	16	20	25	7.3	5	8

### Metric Standard

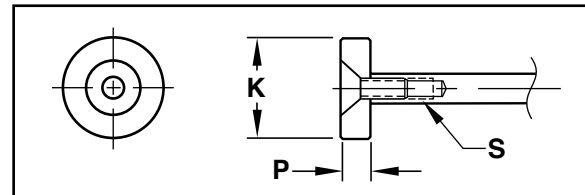
### Inch Standard

**M** AISI 1018 Black Oxided

CATALOG NUMBER	K	P	S
<b>FCHP-8</b>	.61	.188	#8-32
<b>FCHP-10</b>	.61	.188	#10-24
<b>FCHP-4</b>	16	4	M4-.7
<b>FCHP-5</b>	16	4	M5-.8

### Metric Standard

## REPLACEMENT HEEL PLATES



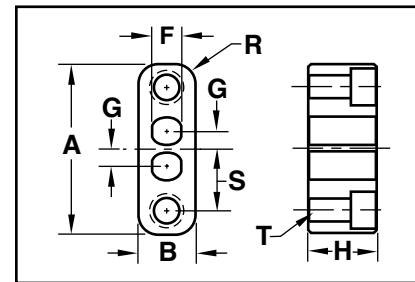
Screw included.

### Inch Standard

**M** CA954 Solid Bronze

CATALOG NUMBER	A	B	H	F	G	R	S	T
<b>FCDBG-24</b>	1.750	.625	.750	.190	.136	.218	.636	1/4-20
<b>FCDBG-48</b>	1.875	.625	.750	.290	.176	.218	.676	1/4-20
<b>FCDBG-6</b>	45	16	20	4.8	3.5	5	16.2	M6-1
<b>FCDBG-12</b>	48	16	20	7.3	4.5	5	17.2	M6-1

### Metric Standard



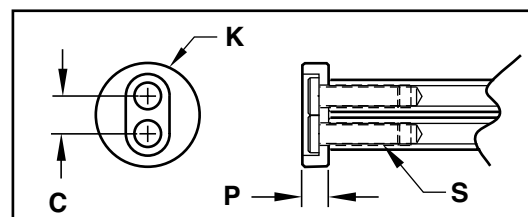
### Inch Standard

**M** AISI 1018 Black Oxided

CATALOG NUMBER	C	K	P	S
<b>FCDHP-8</b>	.272	.750	.188	#8-32
<b>FCDHP-10</b>	.352	.875	.188	#10-24
<b>FCDHP-4</b>	7	20	6	M4-.7
<b>FCDHP-5</b>	9	22	6	M5-.8

### Metric Standard

## REPLACEMENT HEEL PLATES: DOUBLE ACTUATION



Screws included.