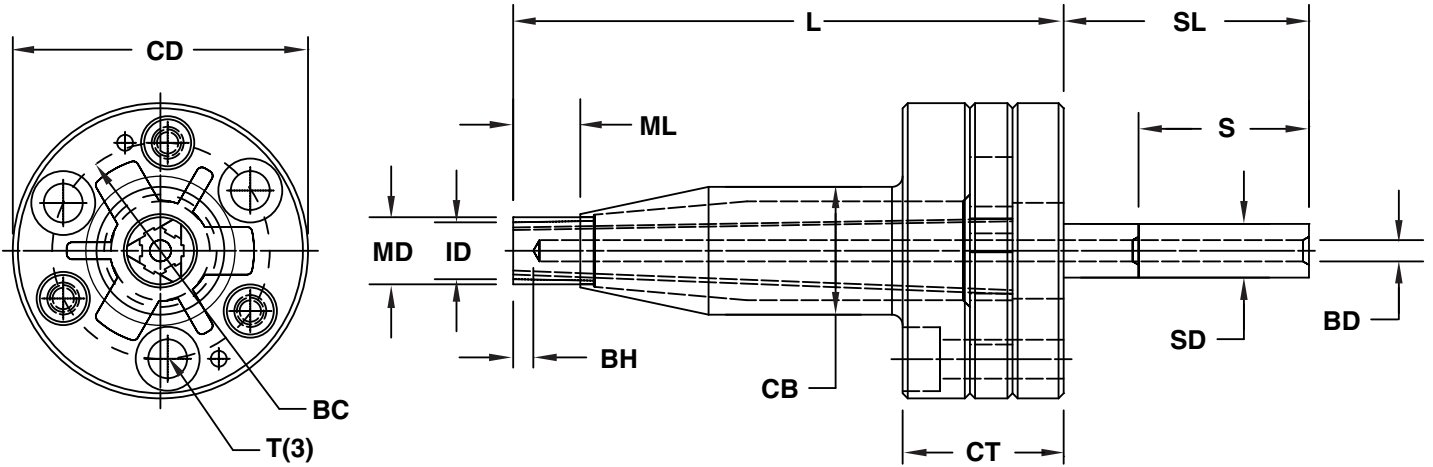


DT CORE SUB-10MM SERIES

The Sub-10mm DT Cores make it possible to release very small threads and undercuts in molded caps, connectors and small medical applications.

- Allows molding of parts with 7-10mm ID.
- Quick Lock plates enable core removal from parting line.
- Simpler alternative to unscrewing molds.
- Reduces cycle time and maintenance requirements.



CATALOG NUMBER	MD Maximum Molding Diameter	ID Minimum Molding Diameter	ML Maximum Molding Length	UC Maximum Undercut	CD Carrier Assembly Diameter	CB Carrier Assembly Body	CT Carrier Assembly Thickness	L Length	SL Shaft Length	SD Shaft Diameter	S Maximum Collapse Stroke	BD Cooling Hole Diameter	BH Cooling Hole Height	BC Mounting Bolt Circle	T Mounting Bolt (3)
S10-Custom	10	7	10	.38	44	19	24	82	36	8	50	3	3	32	M5x25

NOTE: Submit part geometry to information@roehrtool.com for quotes and application review.

Application Guidelines:

- Maximum undercut depth is determined by final molding diameter from application review.
- Collapse stroke is determined by undercut depth from application review.
- Cores are supplied complete with machined molding details.

