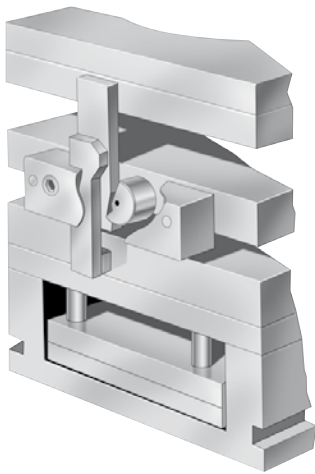


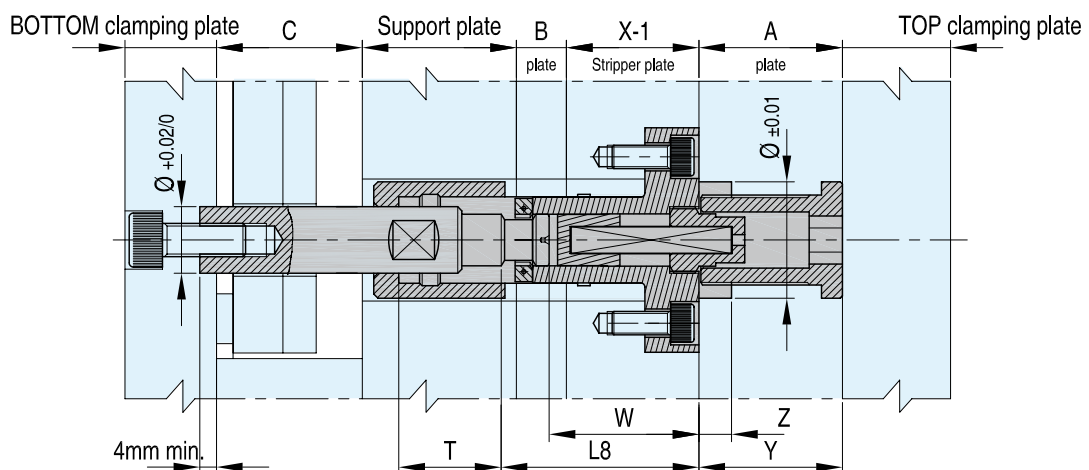
Latch Locks are used to control and float plates during the mold opening and closing sequence. With three different types, **DME** provides a range of installation solutions for all applications:

1. LL: the original **DME** latch lock, successfully used in the field for almost 20 years. A simple, compact design which can be mounted in various configurations on the outside of the mold. Available in small, medium and large in one standard length which is easily cut to size by the toolmaker.

2. KL: very sturdy construction available in 6 different sizes to handle any mold dimension. Simple machining and adjustment allow easy mounting to the outside of the mold.



3. DKL: the modern alternative launched in 2004 and hugely popular with mold designers, builders and injectors. Completely contained inside the mold, DKL does not interfere with external cooling lines and no longer prevents mold being placed on its side. Greatly simplifies mold-making as plates no longer need side-machining, only vertical machining. Optional guided ejection saves space in the mold.



CAD reference point