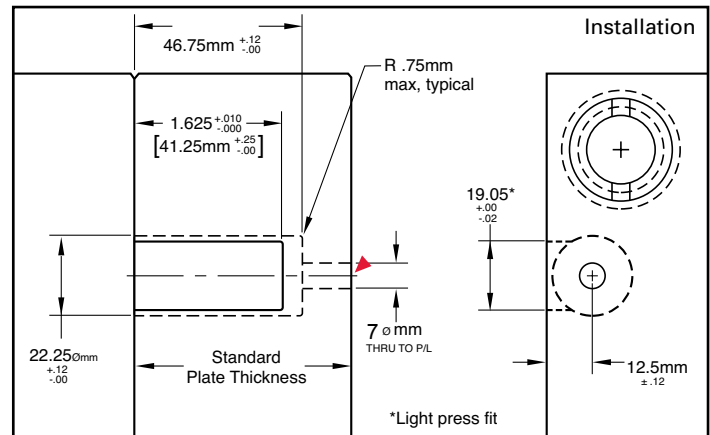
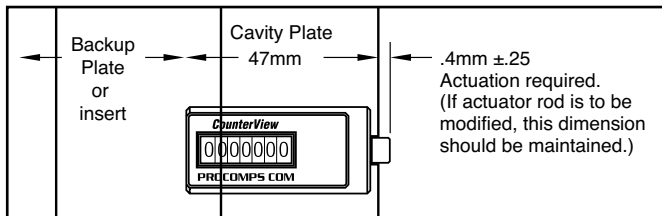
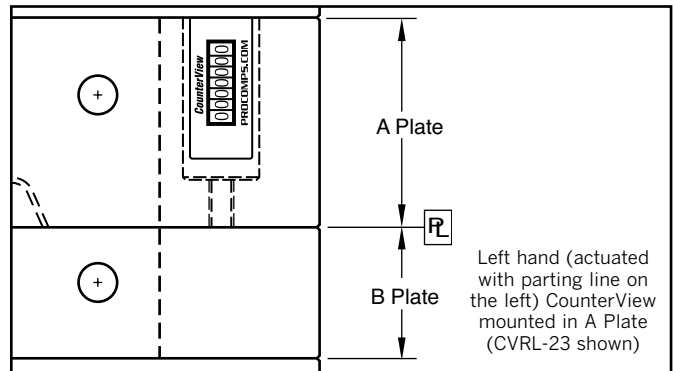
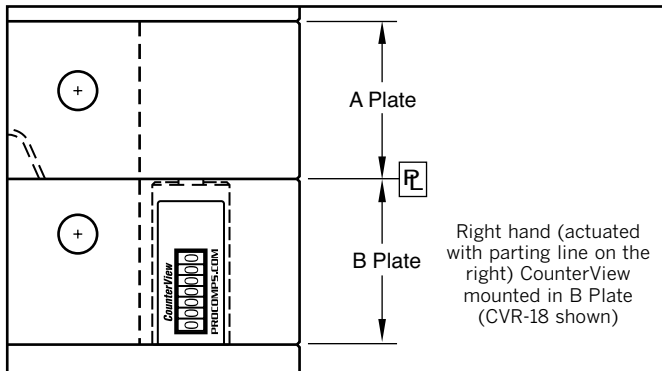




Progressive's CounterView positively monitors mold activity, validates process monitoring data, and assists mold maintenance procedures.

- Maximum operating temperature is 250° F (120° C)
- Counter: Non-resettable mechanical, 7-digit

M Glass-filled Nylon housing



The R-Series CounterView can be installed in the A or B plates with a minimum thickness of 47mm. Larger plates utilize a threaded rod (included with each) that is pre-machined to the appropriate length for standard plate thicknesses to provide consistent actuation.

► CAD insertion point

PARTING LINE AT LEFT



Metric Standard

CATALOG NUMBER	Nominal Plate Thickness
CVRL-56	56
CVRL-66	66
CVRL-76	76
CVRL-96	96
CVRL-116	116
CVRL-196	196

PARTING LINE AT RIGHT



Metric Standard

CATALOG NUMBER	Nominal Plate Thickness
CVR-56	56
CVR-66	66
CVR-76	76
CVR-96	96
CVR-116	116
CVR-196	196

Each R-Series CounterView includes the actuator.

US Patent No. 5,571,539
Canadian Patent No. 2,166,237
European Patent No. EP726129
Asia and others issued and pending.