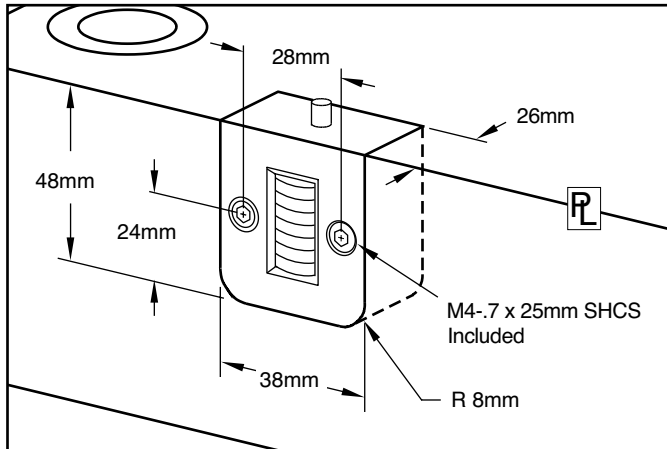


Progressive's CounterView positively monitors mold activity, validates process monitoring data, and assists mold maintenance procedures.

- Maximum operating temperature is 250 °F (120 °C)
- Counter: Non-resettable mechanical, 7-digit



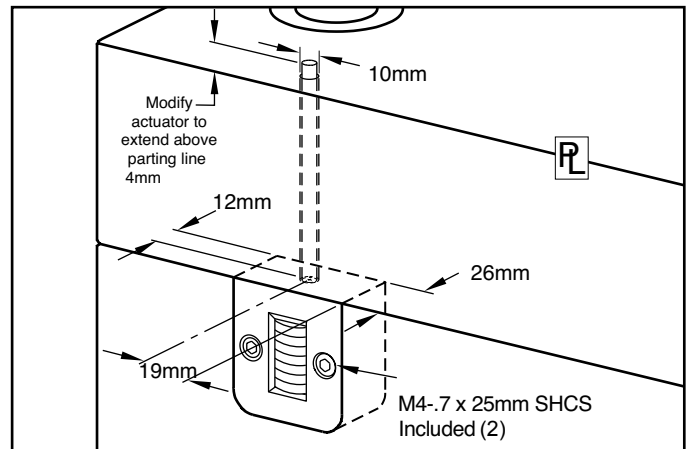
M Glass-filled Nylon housing



PARTING LINE MOUNT Parting line mount makes unit easily visible to operator.

CVPL-200

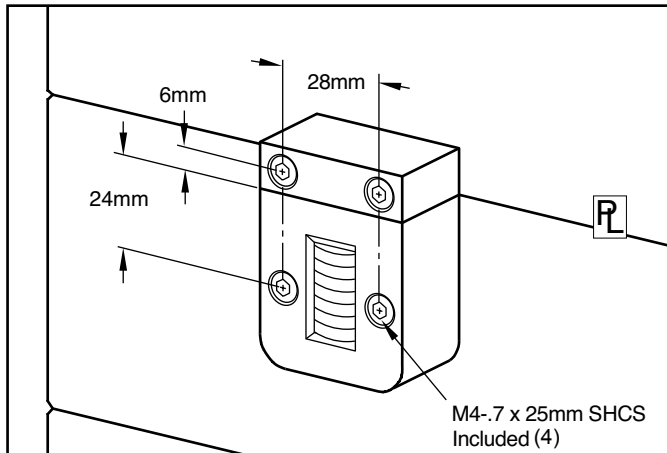
Metric Standard



INTERNAL EXTENSION MOUNT Machinable 8" (200mm) extension allows installation in sup. plate or rail.

CVIN-200

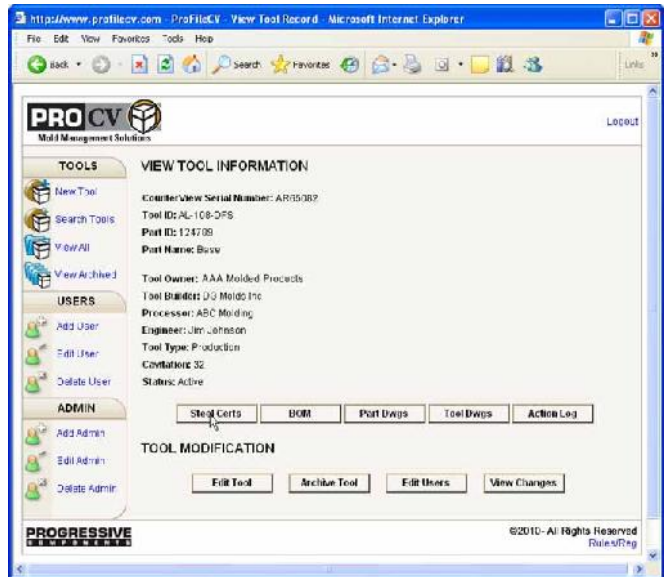
Metric Standard



EXTERNAL MOUNT No pocket machining necessary. Designed specifically for retrofit applications.

CVEX-200

Metric Standard



All CounterViews (200 Series and R Series) have a unique serial number that allows users to view mould information online at profilecv.com.

ID Plates for tool identification sold separately. Contact Customer Service for special ID Plates with your company's logo.



CATALOG NUMBER	DESCRIPTION
CVID	ID Plate for tool identification

US Patent No. 5,571,539
 Canadian Patent No. 2,166,237
 European Patent No. EP726129
 Others issued and pending.