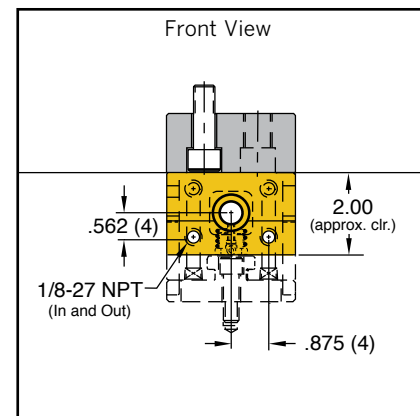
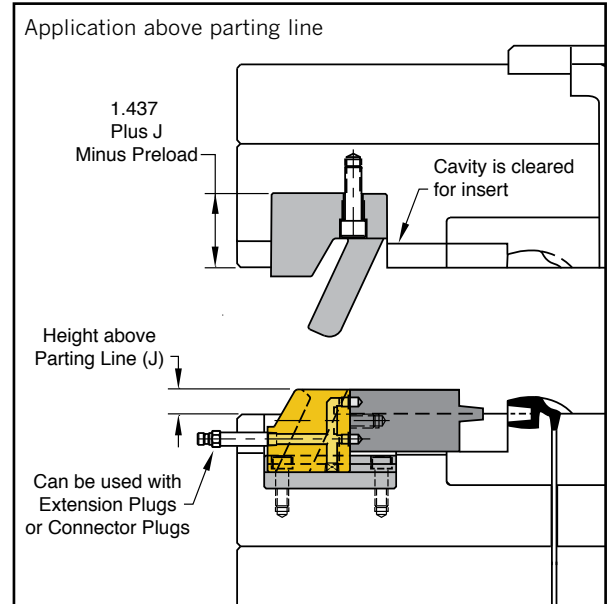
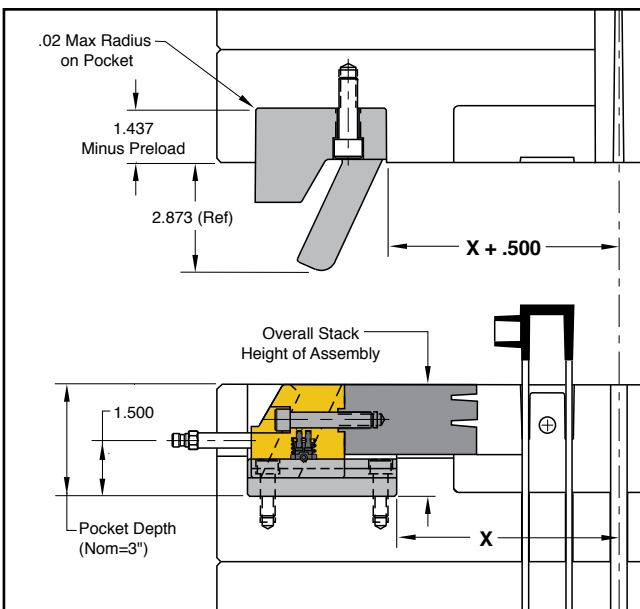
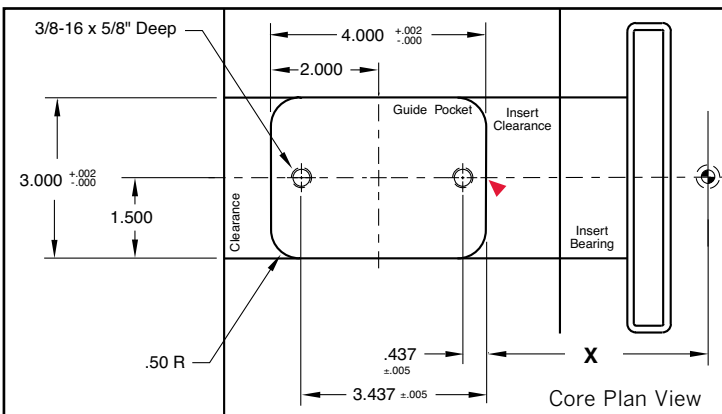
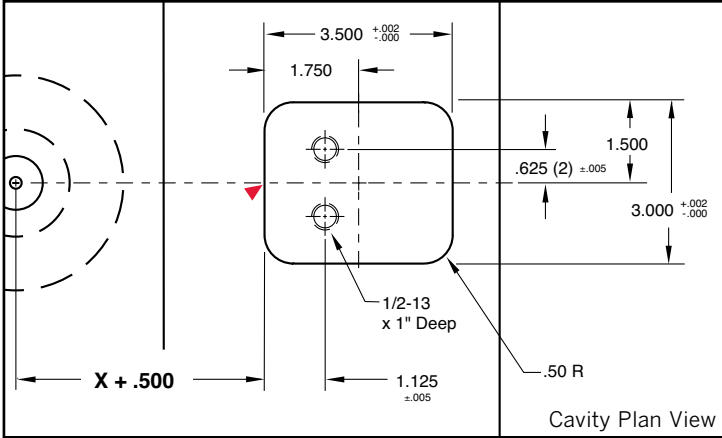
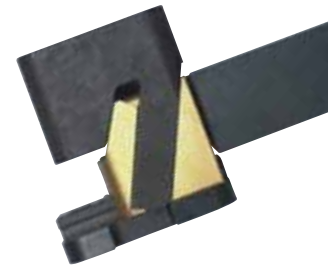


The CamAction is a component that incorporates the elements of a traditional slide (slide, angle pin, heel block) into one compact, off-the-shelf unit. It provides the ability to mould detail features into the side of a moulded part. Easy to install, it reduces lead time and labour when manufacturing moulds. Units have been tested in use to over a million cycles.

NOTE: 400 Series is available in inch standard only!



Each assembly includes an installed SRT-30 Slide Retainer, Threadless Waterline Plugs (2), O-rings (2), and (4) mounting screws.

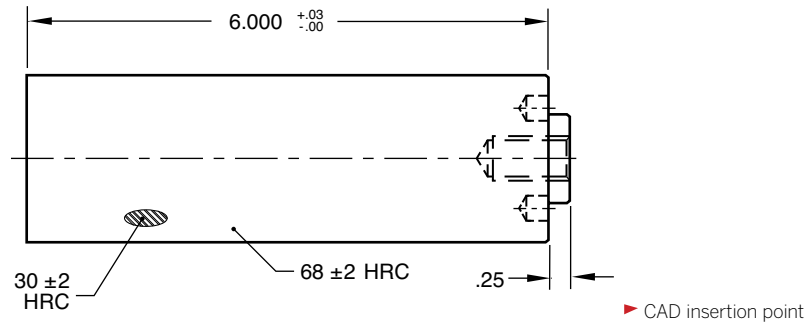
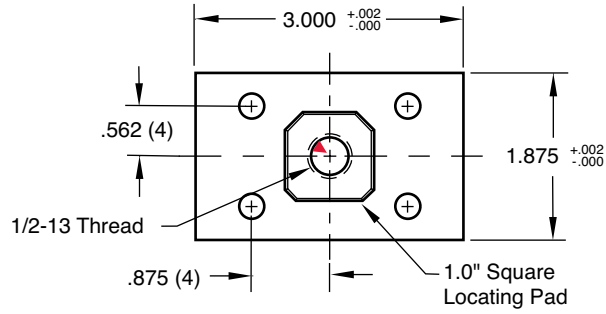
www.m-d-s.co.za

Travel = 1.00"

▶ CAD insertion point

CATALOG NUMBER	DESCRIPTION
CA-400	CamAction Unit with 1" Travel

400 SERIES INSERTS



M P-20 Pre-Hard **S** Salt Bath Nitride (SBN)

CATALOG NUMBER	DESCRIPTION
CSE4-18X30	CA-400 Insert

Socket head cap screw included.

