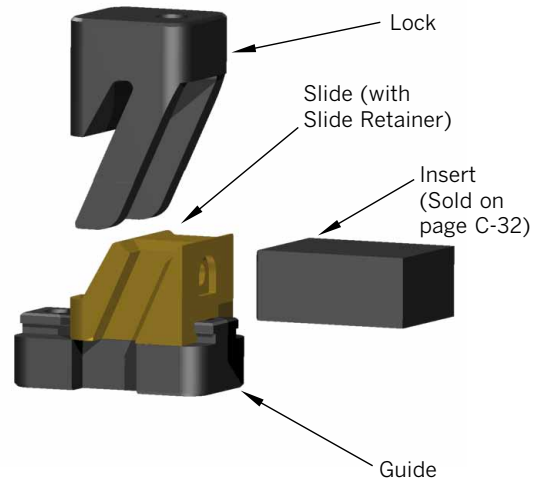
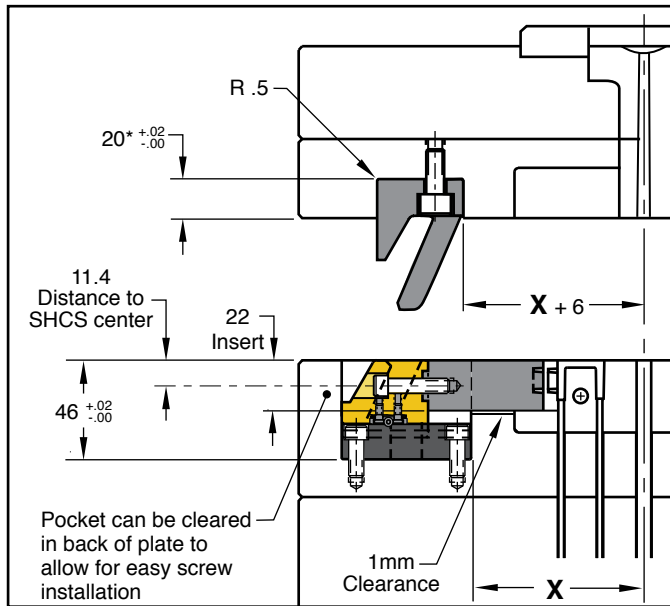
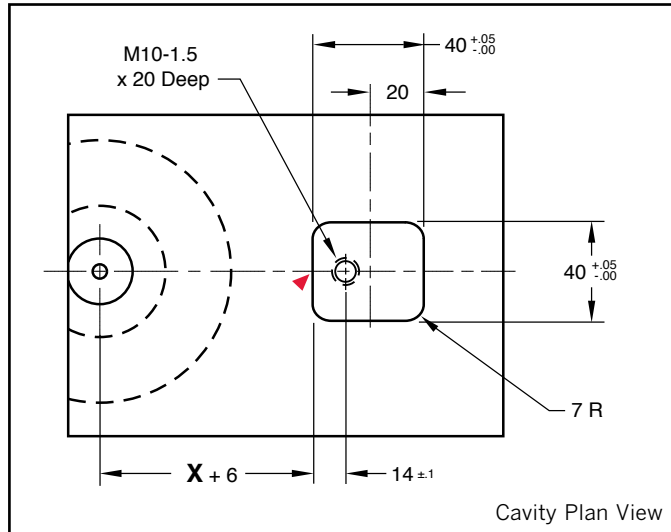
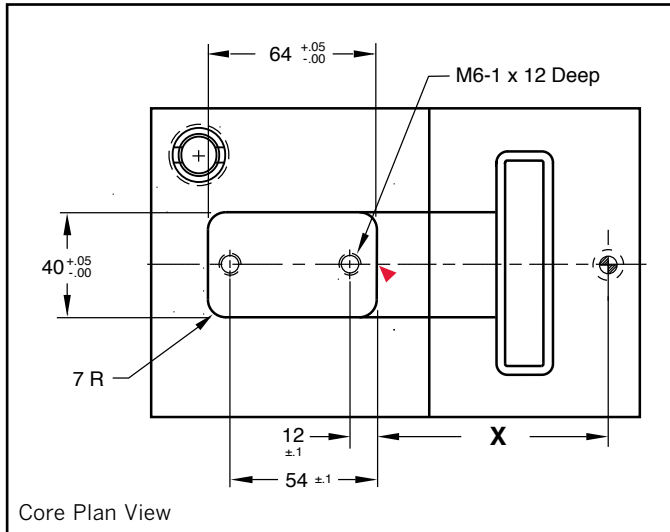




Note: All dimensions and tolerances are in millimeters.



*Minus pre-load.

Travel = 18mm

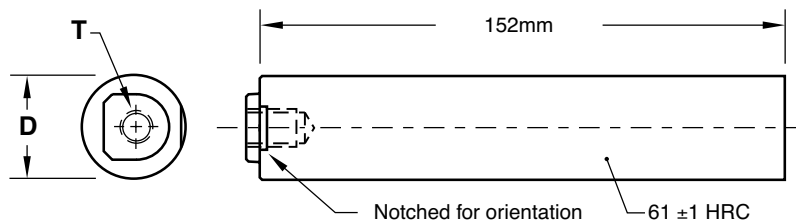
▶ CAD insertion point

CATALOG NUMBER	DESCRIPTION
CAMM-350	CamAction Unit: 350 Series (Metric)

Each assembly includes SRTM-04 Slide Retainer and (3) mounting screws. Individual replacement parts are available. Refer to the price list for catalog numbers and pricing, and contact Customer Service for availability.

US Patent No. 6,116,891
Others pending

300 SERIES CORE PINS

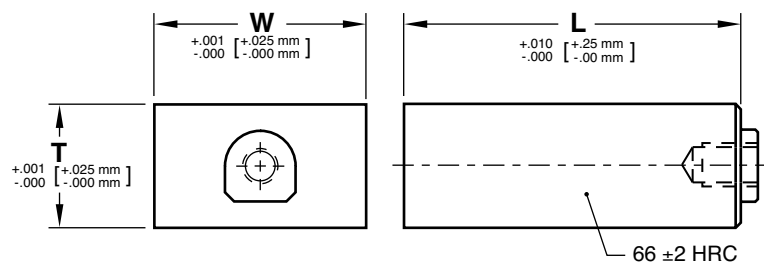


M M-2 **H** 60-62 HRC **S** Chrome Plated

CATALOG NUMBER	D	T
CAP3MM-19	19.009 mm 19.019 mm	M6-1

Socket head cap screw included.

300 SERIES INSERTS

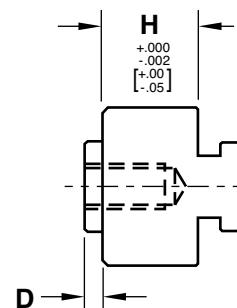
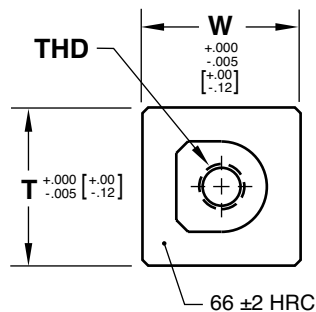
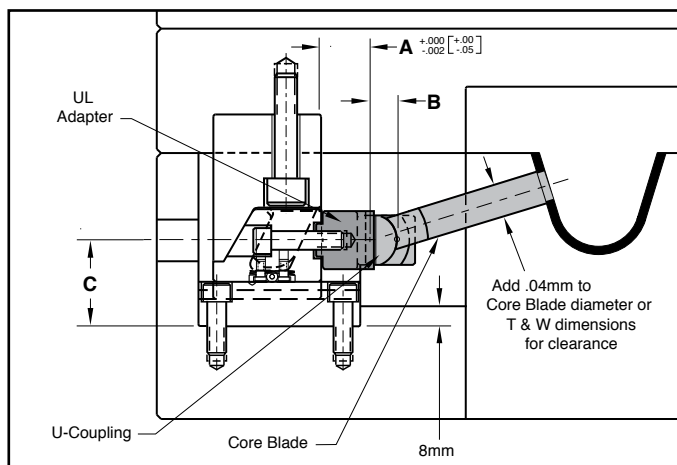


M P-20 Pre-Hard **S** Melonite (SBN)

CATALOG NUMBER	T	W	L
CSE3MM-12	22 mm	38 mm	12 mm
CSE3MM-50	22 mm	38 mm	50 mm

Socket head cap screw included.

300 SERIES UL ADAPTERS



M 4140 **H** 64-68 HRC **S** Melonite (SBN)

CATALOG NUMBER	T	W	H	D	THD	A	B	C	COMPATIBLE U-COUPLING
CTGMM-300	23 mm	23 mm	6 mm	2.5 mm	M6-1	12 mm	10 mm	30.15 mm	UCMM22

Socket head cap screw included. Core Blades and U-Couplings are sold on page C-2 and C-3.