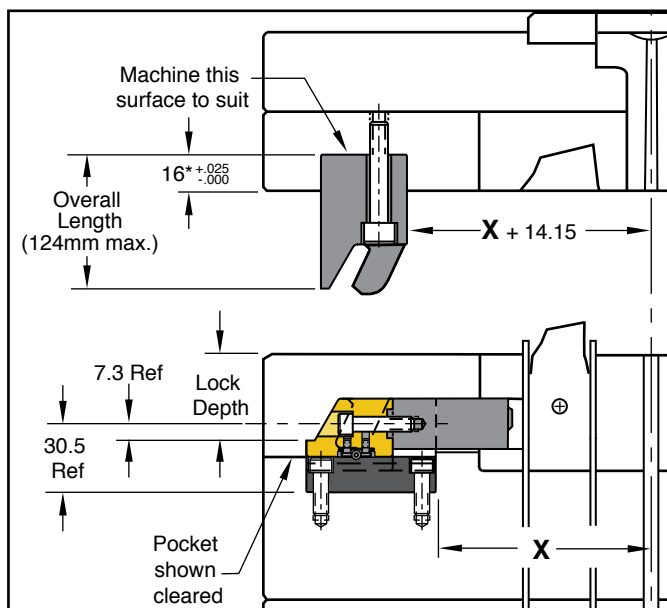
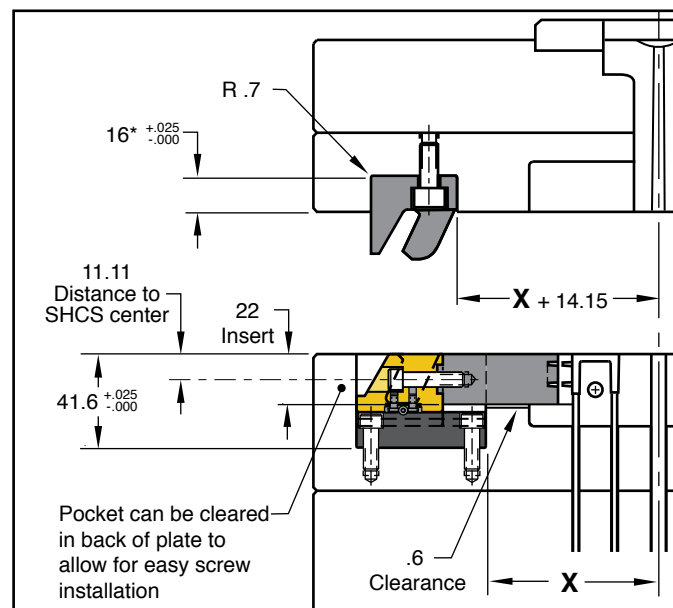
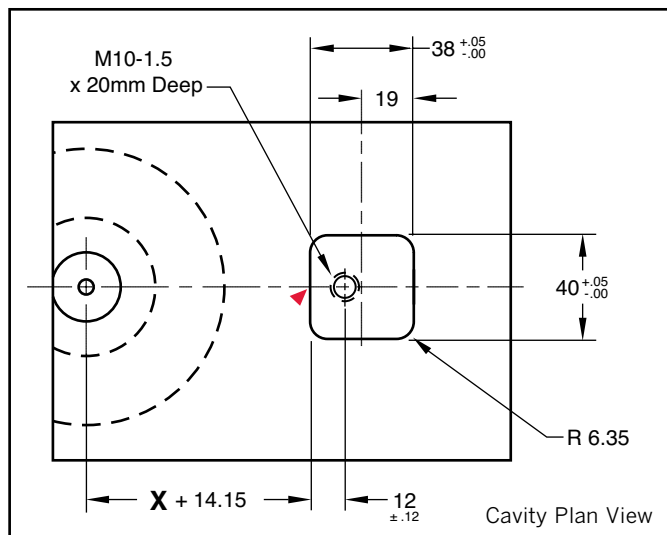
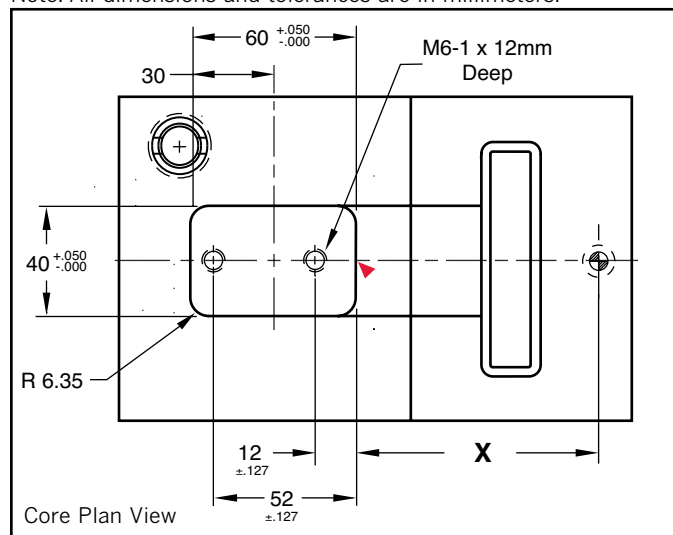


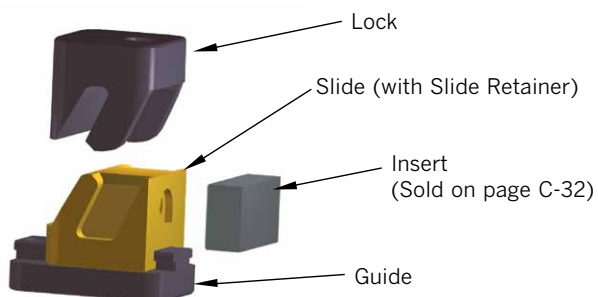
The CamAction is a component that incorporates the elements of a traditional slide (slide, angle pin, heel block) into one compact, off-the-shelf unit. It provides the ability to mould detail features into the side of a moulded part. Easy to install, it reduces lead time and labour when manufacturing moulds. Units have been tested in use to over a million cycles.



Note: All dimensions and tolerances are in millimeters.



\*Minus pre-load.



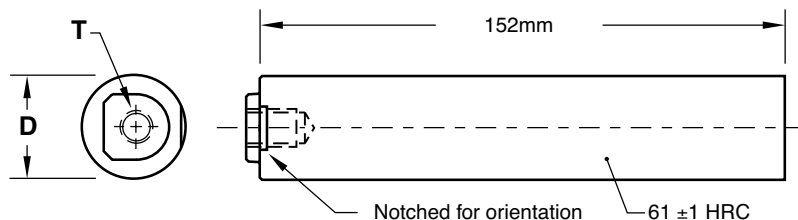
Travel = 6.35 mm

▶ CAD insertion point

CATALOG NUMBER	DESCRIPTION
<b>CAMM-300</b>	Metric CamAction Unit-Standard Lock
<b>CAMM-300L</b>	Metric CamAction Unit-Longer Lock

Each assembly includes SRTM-04 Slide Retainer and (3) mounting screws. Individual replacement parts are available. Refer to the price list for catalog numbers and pricing, and contact Customer Service for availability.

## 300 SERIES CORE PINS

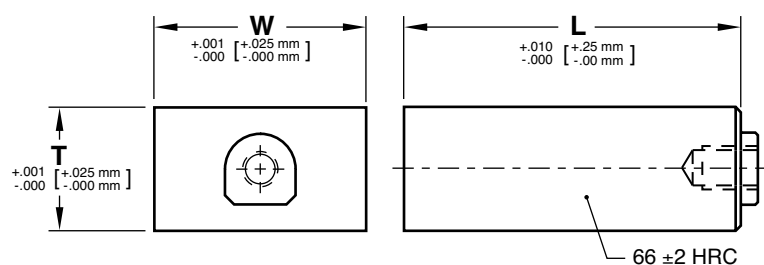


**M** M-2 **H** 60-62 HRC **S** Chrome Plated

CATALOG NUMBER	D	T
<b>CAP3MM-19</b>	19.009 mm 19.019 mm	M6-1

Socket head cap screw included.

## 300 SERIES INSERTS

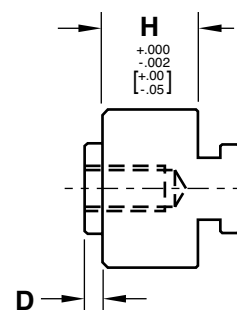
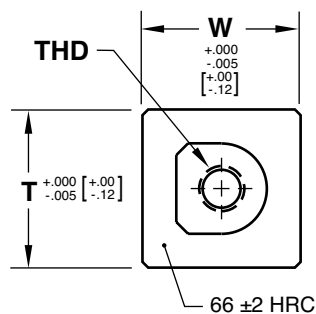
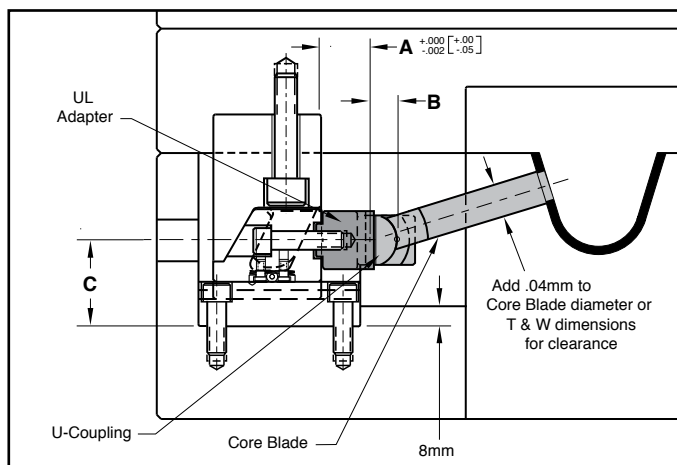


**M** P-20 Pre-Hard **S** Melonite (SBN)

CATALOG NUMBER	T	W	L
<b>CSE3MM-12</b>	22 mm	38 mm	12 mm
<b>CSE3MM-50</b>	22 mm	38 mm	50 mm

Socket head cap screw included.

## 300 SERIES UL ADAPTERS



**M** 4140 **H** 64-68 HRC **S** Melonite (SBN)

CATALOG NUMBER	T	W	H	D	THD	A	B	C	COMPATIBLE U-COUPLING
<b>CTGMM-300</b>	23 mm	23 mm	6 mm	2.5 mm	M6-1	12 mm	10 mm	30.15 mm	UCMM22

Socket head cap screw included. Core Blades and U-Couplings are sold on page C-2 and C-3.