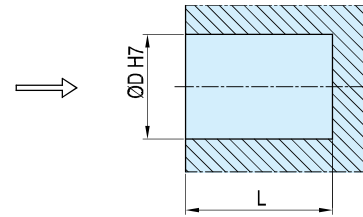
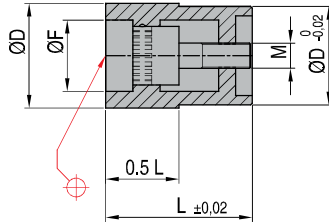
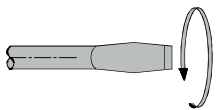
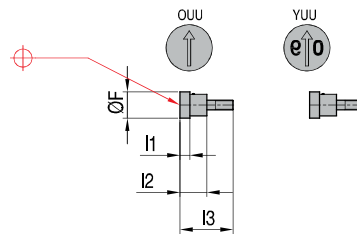




Remove inner insert from the outer insert using a screwdriver



UYM	UOM	UOY	UOD	UOS	UOB	UOR				
							*Specify year			
REF*	REF	REF	REF	REF	REF	REF	D	L	F	M1
UYM 04/200*	UOM 04	UOY 04/200*		UOS 04	UOB 04	UOR 04	4	8	2,4	M1,6x0,2
UYM 05/200*	UOM 05	UOY 05/200*		UOS 05	UOB 05	UOR 05	5	8	2,9	M1,6x0,2
UYM 06/200*	UOM 06	UOY 06/200*		UOS 06	UOB 06	UOR 06	6	8	3,7	M1,6x0,2
UYM 08/200*	UOM 08	UOY 08/200*		UOS 08	UOB 08	UOR 08	8	10	5,0	M2,3x0,25
UYM 10/200*	UOM 10	UOY 10/200*		UOS 10	UOB 10	UOR 10	10	12	6,3	M2,5x0,35
UYM 12/200*	UOM 12	UOY 12/200*		UOS 12	UOB 12	UOR 12	12	14	7,5	M3x0,35
UYM 16/200*	UOM 16	UOY 16/200*	UOD 16	UOS 16	UOB 16	UOR 16	16	14	11,0	M4x0,35
UYM 20/200*	UOM 20	UOY 20/200*	UOD 20	UOS 20	UOB 20	UOR 20	20	16	13,2	M4x0,35



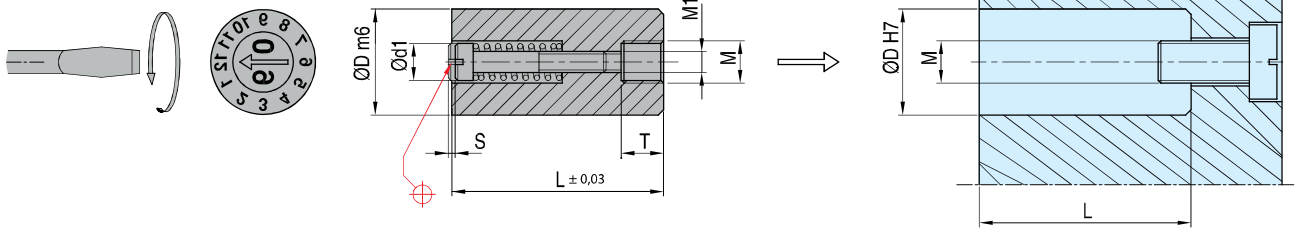
OUU	YUU				
		*Specify year			
REF	REF*	F	l1	l2	l3
OUU 04	YUU 04/200*	2,4	1,5	4,5	7,7
OUU 05	YUU 05/200*	2,9	1,5	4,5	7,7
OUU 06	YUU 06/200*	3,7	1,5	4,5	7,7
OUU 08	YUU 08/200*	5,0	2,0	5,5	9,7
OUU 10	YUU 10/200*	6,3	2,5	6,5	11,7
OUU 12	YUU 12/200*	7,5	2,5	6,8	13,7
OUU 16	YUU 16/200*	11,0	2,5	6,8	13,7
OUU 20	YUU 20/200*	13,2	3,5	8,5	15,7



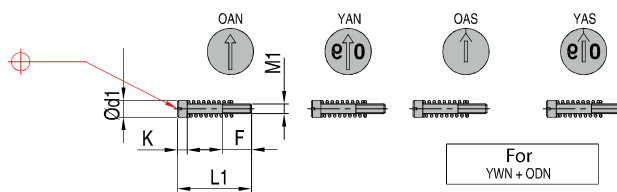
Mat.: Corrosion resistant steel: 50-55 HRC T°:150°



Remove inner insert from the outer insert using a screwdriver



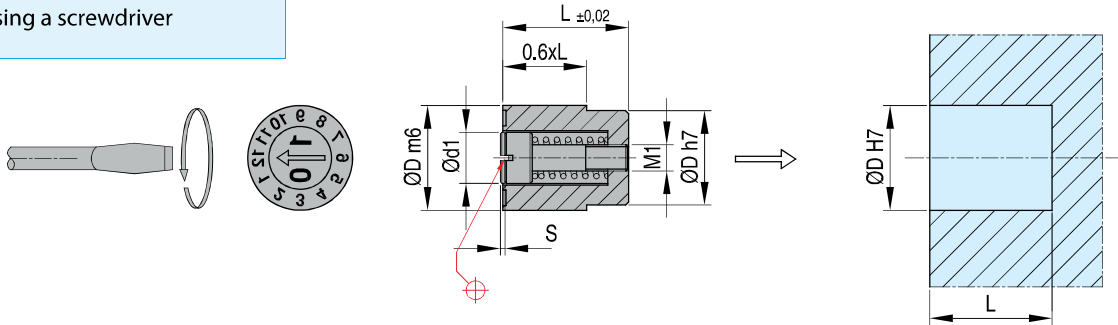
REF	REF*	REF	REF*	REF	REF	REF	REF	REF	REF	REF	D	L	M1	T	S
OMN 05	YMN 05/200*	OYN 05/6	YWN 05/200*	ODN 05	OSN 05	AMN 05	NZN 05	OBN 05	XXN 05		5	17	M3	3,5	0,20
OMN 06	YMN 06/200*	OYN 06/7	YWN 06/200*	ODN 06	OSN 06	AMN 06	NZN 06	OBN 06	XXN 06		6	17	M3	3,5	0,20
OMN 08	YMN 08/200*	OYN 08/7	YWN 08/200*	ODN 08	OSN 08	AMN 08	NZN 08	OBN 08	XXN 08		8	20	M4	4,0	0,35
OMN 10	YMN 10/200*	OYN 10/7	YWN 10/200*	ODN 10	OSN 10	AMN 10	NZN 10	OBN 10	XXN 10		10	20	M5	4,0	0,35
OMN 12	YMN 12/200*	OYN 12/7	YWN 12/200*	ODN 12	OSN 12	AMN 12	NZN 12	OBN 12	XXN 12		12	25	M6	6,0	0,50
OMN 16	YMN 16/200*	OYN 16/7	YWN 16/200*	ODN 16	OSN 16	AMN 16	NZN 16	OBN 16	XXN 16		16	33	M8	8,0	0,60
OMN 20	YMN 20/200*	OYN 20/7	YWN 20/200*	ODN 20	OSN 20	AMN 20	NZN 20	OBN 20	XXN 20		20	33	M8	8,0	0,60



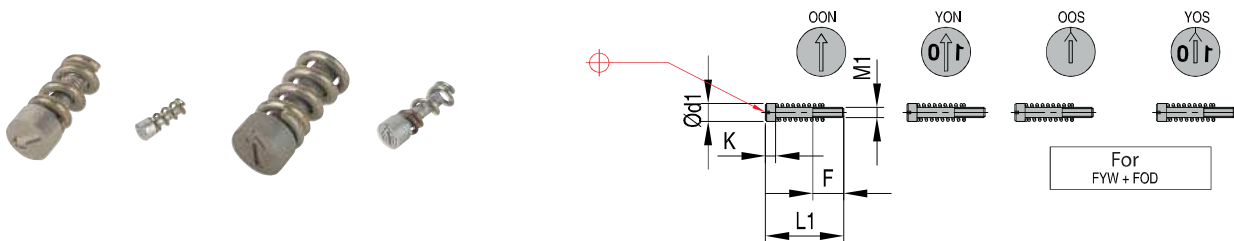
REF	REF*	REF	REF*	M1	d1	K	F	L1
OAN 05	YAN 05/200*	OAS 05	YAS 05/200*	M1,6 x 0,2	3,1	3	5	13
OAN 06	YAN 06/200*	OAS 06	YAS 06/200*	M1,6 x 0,2	3,1	3	5	13
OAN 08	YAN 08/200*	OAS 08	YAS 08/200*	M2,5 x 0,35	4,6	4	6	14
OAN 10	YAN 10/200*	OAS 10	YAS 10/200*	M2,5 x 0,35	4,6	4	6	14
OAN 12	YAN 12/200*	OAS 12	YAS 12/200*	M3 x 0,50	6,4	4	6	17
OAN 16	YAN 16/200*	OAS 16	YAS 16/200*	M3,5 x 0,60	8,4	5	8	23
OAN 20	YAN 20/200*	OAS 20	YAS 20/200*	M3,5 x 0,60	11,0	5	8	23



Remove inner insert from the outer insert using a screwdriver



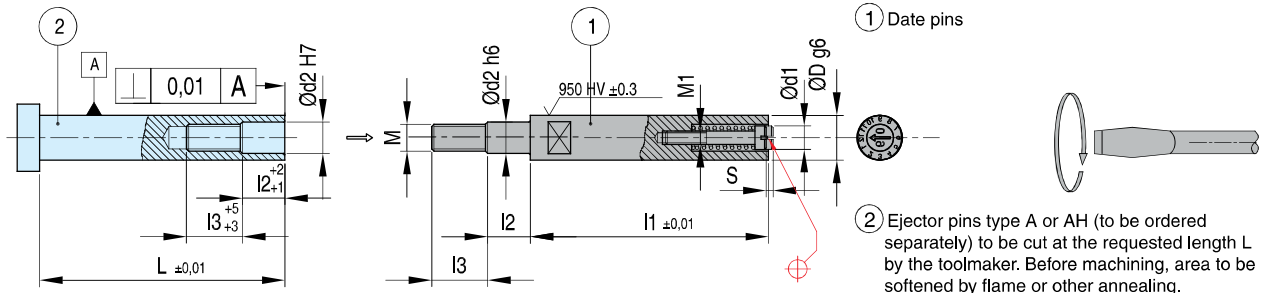
REF	REF*	REF	REF*	REF	REF	REF	REF	REF	REF	REF	D	L	S	M1
FOM 02,6	FYM 02,6/200*	FOY 02,6			FOS 02,6	FAM 02,6	FNZ 02,6	FOB 02,6	FXX 02,6		2,6	4	0,2	M0,8 x 0,2
FOM 03	FYM 03/200*	FOY 03			FOS 03	FAM 03	FNZ 03	FOB 03	FXX 03		3	4	0,2	M0,8 x 0,2
FOM 04	FYM 04/200*	FOY 04			FOS 04	FAM 04	FNZ 04	FOB 04	FXX 04		4	5	0,2	M1,1 x 0,25
FOM 05	FYM 05/200*	FOY 05	FYW 05/200*	FOD 05	FOS 05	FAM 05	FNZ 05	FOB 05	FXX 05		5	8	0,2	M1,6 x 0,2
FOM 06	FYM 06/200*	FOY 06	FYW 06/200*	FOD 06	FOS 06	FAM 06	FNZ 06	FOB 06	FXX 06		6	8	0,2	M1,6 x 0,2
FOM 08	FYM 08/200*	FOY 08	FYW 08/200*	FOD 08	FOS 08	FAM 08	FNZ 08	FOB 08	FXX 08		8	10	0,25	M2,3 x 0,25
FOM 10	FYM 10/200*	FOY 10	FYW 10/200*	FOD 10	FOS 10	FAM 10	FNZ 10	FOB 10	FXX 10		10	12	0,35	M2,3 x 0,25
FOM 12	FYM 12/200*	FOY 12	FYW 12/200*	FOD 12	FOS 12	FAM 12	FNZ 12	FOB 12	FXX 12		12	14	0,35	M3 x 0,35
FOM 16	FYM 16/200*	FOY 16	FYW 16/200*	FOD 16	FOS 16	FAM 16	FNZ 16	FOB 16	FXX 16		16	14	0,35	M4 x 0,35
FOM 20	FYM 20/200*	FOY 20	FOM 20/200*	FOD 20	FOS 20	FAM 20	FNZ 20	FOB 20	FXX 20		20	16	0,35	M4 x 0,35



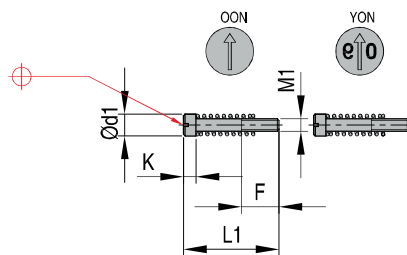
REF	REF*	REF	REF*	M1	d1	K	F	L1
OON 02,6	YON 02,6/200*			M0,8 x 0,2	1,4	0,9	1,5	4
OON 03	YON 03/200*			M0,8 x 0,2	1,5	0,9	1,5	4
OON 04	YON 04/200*			M1,1 x 0,25	2,1	1,2	2,0	5
OON 05	YON 05/200*	OOS 05	YOS 05/200*	M1,6 x 0,2	3,1	2,0	3,0	8
OON 06	YON 06/200*	OOS 06	YOS 06/200*	M1,6 x 0,2	3,1	2,0	3,0	8
OON 06	YON 06/200*	OOS 06	YOS 06/200*	M2,3 x 0,25	4,4	2,5	4,0	10
OON 10	YON 10/200*	OOS 10	YOS 10/200*	M2,5 x 0,35	5,2	3,0	4,5	12
OON 12	YON 12/200*	OOS 12	YOS 12/200*	M3 x 0,35	6,2	3,0	5,0	14
OON 16	YON 16/200*	OOS 16	YOS 16/200*	M4 x 0,35	8,2	3,5	5,0	14
OON 20	YON 20/200*	OOS 20	YOS 20/200*	M4 x 0,35	11	4,5	5,0	16



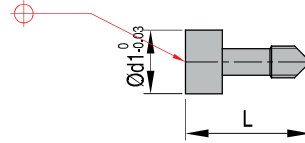
Date pins-date stamp on ejector or core pin



DOY	DOM	DYM	DOD	DOB	*Specify year							
REF	REF	REF	REF*	REF	D	d2	l1	l2	l3	S	M	
DOY 06	DOM 06	DYM 06/200*		DOB 06	6	4	80	6	6	0,2	M3 x 0,5	
DOY 08	DOM 08	DYM 08/200*		DOB 08	8	6	80	9	10	0,25	M5 x 0,8	
DOY 10	DOM 10	DYM 10/200*		DOB 10	10	7	80	10	12	0,35	M6 x 1	
DOY 12	DOM 12	DYM 12/200*	DOD 12	DOB 12	12	9	120	13	16	0,35	M8 x 1	
DOY 16	DOM 16	DYM 16/200*	DOD 16	DOB 16	16	12	120	13	16	0,35	M10 x 1	



OON	YON	*Specify year				
REF	REF*	M1	d1	K	F	L1
OON 06	YON 06/200*	M1,6 x 0,2	3,1	2,0	3,0	8
OON 08	YON 08/200*	M2,3 x 0,25	4,4	2,5	4,0	10
OON 10	YON 10/200*	M2,5 x 0,35	5,2	3,0	4,5	12
OON 12	YON 12/200*	M3 x 0,35	6,2	3,0	5,0	14
OON 16	YON 16/200*	M4 x 0,35	8,2	3,5	5,0	14

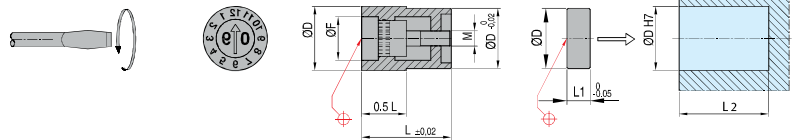


REF	REF*	d1	L
IA SF 3217	IA 3217/200*	3,2	17,0
IA SF 4717	IA 4717/200*	4,7	17,0
IA SF 5717	IA 5717/200*	5,7	17,0
IA SF 6717	IA 6717/200*	6,7	17,0
IA SF 8717	IA 8717/200*	8,7	17,0
IA SF 1007	IA 1007/200*	10,7	17,0
IA SF 2275	IA 2275/200*	2,2	7,5
IA SF 3075	IA 3075/200*	3,0	7,5

*Specify year

Date Stamps-inner inserts

UYM-UOM-UOY-UOD
UOS-UOB-UOR-DSF

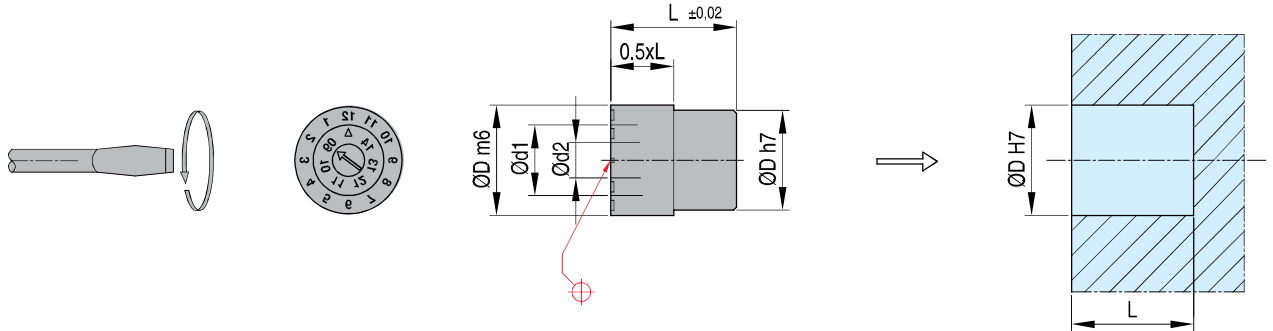


UYM	UOM	UOY	UOD	UOS	UOB	UOR	
							*Specify year

REF*	REF	REF	REF*	REF	REF	REF	D	L	F	M1	REF	L1	L2
UYM 04/200*	UOM 04	UOY 04/200*		UOS 04	UOB 04	UOR 04	4	8	2,4	M1,6x0,2	DSF 0404	4	12
UYM 05/200*	UOM 05	UOY 05/200*		UOS 05	UOB 05	UOR 05	5	8	2,9	M1,6x0,2	DSF 0504	4	12
UYM 06/200*	UOM 06	UOY 06/200*		UOS 06	UOB 06	UOR 06	6	8	3,7	M1,6x0,2	DSF 0612	12	20
UYM 08/200*	UOM 08	UOY 08/200*		UOS 08	UOB 08	UOR 08	8	10	5,0	M2,3x0,25	DSF 0810	10	20
UYM 10/200*	UOM 10	UOY 10/200*		UOS 10	UOB 10	UOR 10	10	12	6,3	M2,5x0,35	DSF 1008	8	20
UYM 12/200*	UOM 12	UOY 12/200*		UOS 12	UOB 12	UOR 12	12	14	7,5	M3x0,35	DSF 1206	6	20
UYM 16/200*	UOM 16	UOY 16/200*	UOD 16	UOS 16	UOB 16	UOR 16	16	14	11,0	M4x0,35	DSF 1606	6	20
UYM 20/200*	UOM 20	UOY 20/200*	UOD 20	UOS 20	UOB 20	UOR 20	20	16	13,2	M4x0,35	DSF 2004	4	20



Mat.: Stainless steel 50-55 HRC T°:150°



*Specify year

REF*	D	d1	d2	L	L/2
MD 06 200*	6	3,8	1,8	10	5
MD 08 200*	8	5,3	2,5	10	5
MD 10 200*	10	6,4	3,2	12	6
MD 16 200*	16	10,5	5,0	14	7

- Set of 5 screw drivers
- Custom made for the complete DME range of date stamps
- Blades made of chrome-vanadium-molybdenum-steel fully hardened and chromium plated for precision and long life
- Ergonomic handle design
- Color coded pivot cap
- Extremely precise fit of the tip



			UYM	FYM	YMN	MD
2x	1,1 x 0,20 x 60			Ø 2,6 Ø3		
1x	1,6 x 0,15 x 60		Ø4	Ø4	Ø4	
1x	2,3 x 0,20 x 60		Ø5 Ø6	Ø5 Ø6	Ø5 Ø6	Ø10
1x	3,0 x 0,30 x 60		Ø8	Ø8	Ø8	Ø16