

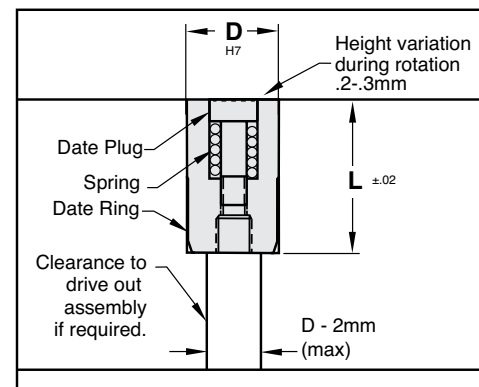
Date Rings

M 420 Stainless Steel **H** 50-54 HRC

CATALOG NUMBER	D	L
DL06	6	20
DL08	8	
DL10	10	
DL16	16	

Engraving Depth:
Numbers: .2mm (.007")
Arrows: .4mm (.015")

Installation Guidelines:



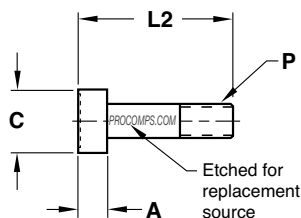
Maximum mold temperature: 285° F (140° C)

Date Plugs

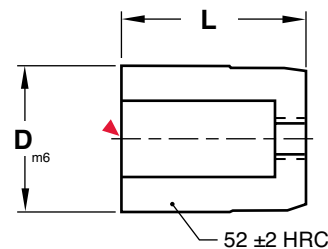
CATALOG NUMBER	D	C	A	L2	P	ARROW ONLY
DLP06-12	6	3.1	3.0	13	M1.6x0.20	DLP06-AO
DLP08-12	8	4.6	4.0	14	M2.5x0.35	DLP08-AO
DLP10-12	10	4.6	4.0	14	M2.5x0.35	DLP10-AO
DLP16-12	16	8.2	3.5	14	M4x0.35	DLP16-AO

For other date plugs, modify catalog number for the year required.
Example: DLP06-13. Plugs include springs and replacements are available.

D SERIES: DEEP ENGRAVING



Engraving Depth:
Numbers: .5mm (.020")
Arrows: .4mm (.015")



Date Plugs

M 420 Stainless Steel **H** 50-54 HRC

▶ CAD insertion point

CATALOG NUMBER	D	C	A	L2	P	ARROW ONLY
DCP10D-12	10	5.2	3.0	12	M2.5x0.35	DCP10-AO
DCP12D-12	12	6.2	3.0	14	M3x0.35	DCP12-AO
DCP16D-12	16	8.2	3.5	14	M4x0.35	DCP16-AO
DCP20D-12	20	11.0	4.5	16	M4x0.35	DCP20-AO

For other date plugs, modify catalog number for the year required.
Example: DCP16D-13. Plugs include springs and replacements are available.

Date Rings

CATALOG NUMBER	D Ring Diameter	L
DC10-D	10	12
DC12-D	12	14
DC16-D	16	14
DC20-D	20	16