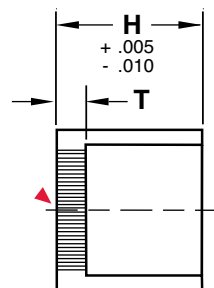
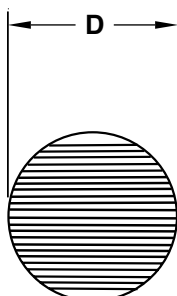


D Tolerances
 1/8 ϕ - 3/8 ϕ +.0015
 +.0005
 1/2 ϕ and Up +.001
 +.002



M Brass

D Nominal Hole Diam.	T Thickness	H Height	Slot Width =.010"	Slot Width =.014"
1/8	.093	.250	BV125X09S10	BV125X09S14
3/16	.093	.250	BV187X09S10	BV187X09S14
	.156	.312	-	BV187X15S14
1/4	.093	.312	BV250X09S10	BV250X15S14
	.156	.375	-	BV250X15S14
3/8	.093	.312	BV375X09S10	BV375X09S14
	.156	.375	-	BV375X15S14
1/2	.093	.312	BV500X09S10	BV500X09S14
	.156	.375	-	BV500X15S14
5/8	.093	.312	BV625X09S10	BV625X09S14
	.156	.375	-	BV625X15S14

M Aluminum

D Nominal Hole Diam.	T Thickness	H Height	Slot Width =.014"
1/8	.093	.250	AV125X09S14
3/16	.093	.250	AV187X09S14
1/4	.093	.250	AV250X09S14
	.156	.375	AV250X15S14
3/8	.093	.250	AV375X09S14
	.156	.312	AV375X15S14
1/2	.093	.250	AV500X09S14
	.156	.375	AV500X15S14

VENT CLEANER



CATALOG NUMBER	DESCRIPTION
BVC-1	Core Box Vent Cleaner