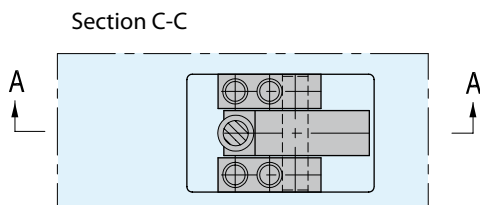
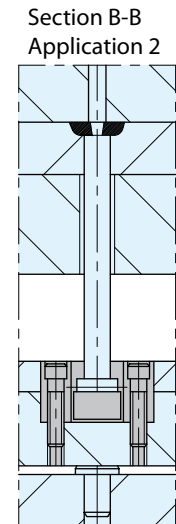
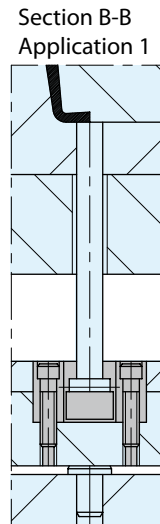
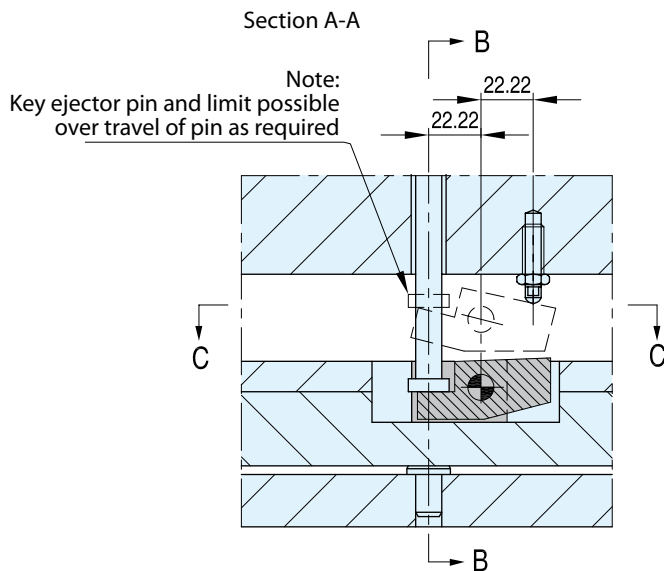


The accelerated knock-outs are simple in design, using a pivot-type motion for accelerated ejection. Mechanical advantage is 2:1. They will accommodate ejector pins up to 9,5mm in diameter. (Pins with head diameters over 15,8mm can be ground down to fit). Simplicity of design permits accelerated knock-outs to be either inserted into the ejector plate (as shown below) or top mounted, depending on space available for the ejection movement.



CAD reference point